

THE SOUTH AUSTRALIAN WOMEN'S FOOTY BUDGET

THURSDAY, JUNE 19th, 2025

Volume 9/14

KATE SCHULTZE - 100 GAMES



CONGRATULATIONS
TO KATE ON 100 GAMES
FOR NAIRNE BREMER



REAL LOCAL FOOTY LIVES HERE

We won't miss the mark

With access to a wide range of insurance covers, let MGA keep you ahead of the game with sourcing and comparing policies



- Property • Business • Motor • Strata
- Marine • Livestock • Farm • Crop
- General Liability • Management Liability
- Cyber Liability + many more risks covered

Call us for a quote 8291 2300

www.mga.com



STANDING BY YOU

INDEX

THE SOUTH AUSTRALIAN FOOTBALLER

Managing Editor
Luke Hosie

Office Manager and Account
Lyka Ituralba

Magazine Designer
April Basubas

Graphic Design/Artists
April Basubas, Luke Hosie

Website Design, IT and Communications
Lyka Ituralba

Social Media Marketing

Team of Students from the University
who handle our social media
Lyka Ituralba, Leslie Ituralba, Luke Hosie

Photographers

Thanking the myriad of amateur photographers
from around South Australia, plus our professional
photographers: Ursula Montgomerie, Matthew
Long, Bron Pahl, Grant Schwartzkopff, Kyran Cocks,
Steve Walters, Hannah Howard, On-the-ball Media,
Kate Carraill, K8 Photographics, Simon Passehl

Thanks to our team of journalists, writers, interviewers, videographers, broadcasters and staff

Thank you to our journalists who write our game previews and reviews each week

Particular thanks to our sub-editors: Sam Cannadine and Aidan Oliver

Thanking Jordan Routley for his previews and reviews of all SANFL games

ALL LEGAL DISCLAIMERS ARE ON THE BACK COVER

CONTACT US

Stralia Sports.Com Pty Ltd
ACN 601 562 289

Managing Director
Luke Hosie

Phone: 0404 846 412

Website: www.safotballer.com.au

Email: thesafotballer_adam.com.au

CLICK ON THE ICONS BELOW TO BE TAKEN DIRECTLY
THROUGH TO OUR SOCIAL MEDIA PLATFORMS



MS ALLURE
DESIGN THE LIFE YOU LOVE



**GIFT
VOUCHERS
AVAILABLE**

Tania Dunn
Ambassador

0411 855 118

sparklinlikeadiamond@gmail.com

Ms Allure with Tania

<https://msallure.com.au/?ref=TANIADUNN>



HEY DIDDLE
WINES



SIGN UP TO OUR MAILING LIST & 
RECEIVE 40% OFF YOUR FIRST ORDER

heydiddle.com.au | follow us on Insta & FB @heydiddlewines



DIVISION 1

PREMIERSHIP LADDER

	Team	P	PTS	%	W	L	D	BYE	FOR	AGST
1	Payneham NU	8	16	63.89	8	0	0	0	515	291
2	Henley	8	10	67.59	5	3	0	0	536	257
3	Happy Valley	8	10	43.92	5	3	0	0	253	323
4	Morphettville Park	8	8	55.52	4	4	0	0	377	302
5	Goodwood Saints	8	8	53.10	4	4	0	0	274	242
6	Hectorville	8	8	46.32	4	4	0	0	309	358
7	Broadview	8	4	43.17	2	6	0	0	256	337
8	Golden Grove	8	0	19.03	0	8	0	0	126	536

LEADING GOALKICKERS

	Player	Team	Games	Goals
1	Teagan Dunbar	Henley	8	33
2	Chloe Samuel	Payneham NU	6	14
3	Emma Whyte	Goodwood Saints	8	13
4	Caitlyn Swanson	Morphettville Park	7	13
5	Letisha Ackland	Payneham NU	4	11
6	Grace Mulvahil	Hectorville	6	9
7	Taylah Roberts	Hectorville	7	8
8	Grace Whittaker	Hectorville	7	8

NEXT ROUND OF MATCHES

SAT 21 JUN - A-GRADE MATCHES BEGIN AT 3:15 PM UNLESS OTHERWISE NOTIFIED

Goodwood Saints v Payneham NU
Henley v Golden Grove
Morphettville Park v Happy Valley
Broadview v Hectorville

Goodwood Oval
Henley Memorial Oval
Kellett Reserve Oval
06:30 PM, Broadview Oval

THE SOUTH AUSTRALIAN
FOOTBALLER

**SOUTH
AUSTRALIA'S
PREMIER
FOOTBALL
PUBLICATIONS**

**COVERING ALL
FOOTBALL ACROSS
SOUTH AUSTRALIA**

- **AFL** • **SANFL**
- **AMATEURS**
- **WOMEN'S**
- **COUNTRY**

THE SOUTH AUSTRALIAN
FOOTBALLER



FOLLOW US ON SOCIAL MEDIA

DIVISION 1

THE FINAL SCOREBOARD

Happy Valley 2.4-16

Henley 9.8-62

Happy Valley

Goal Kickers: Jorja Hooper 2

Best Players: Emily Smith, Patricia Kaupert, Lauren Bungey, Makyah Willis, Brooke Clark

Henley

Goal Kickers: Teagan Dunbar 5, Ellie Fixter 2, Demi Bates 1, Shannon Murphy 1

Best Players: Hayley Conlon, Shannon Murphy, Erica Rowe, Eliza Cooper, Demi Bates

Payneham NU 7.6-48

Morphettville Park 5.3-33

Payneham NU

Goal Kickers: Chelsea Packer 5, Adrienne Davies 1, Chloe Samuel 1

Best Players: Zoe Proude, Chelsea Packer, Chloe Samuel, Stephanie Gibson, Georgia Mee

Morphettville Park

Goal Kickers: Brooklyn Kraft 1, Melinda Speechley 1, Caitlyn Swanson 1, Julia Watson 1, Jiarna Zerella 1

Best Players: Tamsyn Morriss, Jiarna Zerella, Brooke Trevena, Brooklyn Kraft, Jorja Eldridge

Golden Grove 4.2-26

Broadview 4.7-31

Golden Grove

Goal Kickers: Kasey Irwin 1, Ayla Johnson 1, Kelsi Ley 1, Dakota Whyte 1

Best Players: Amalie Rose Innes, Kelsi Ley, Sara Lauren Belkner, Madison Koop, Hayley Hill

Broadview

Goal Kickers: Kelis Jackson-Martin 2, Remy Grant 1, Amy Jones 1

Best Players: Brianna Arthur, Sasha Branson, Annabel Baker, Alana Dolling, Liana Antonoli

Hectorville 3.6-24

Goodwood Saints 4.8-32

Hectorville

Goal Kickers: Taylah Roberts 2, Grace Whittaker 1

Best Players: Rosie Boon, Tess McCormack, Sydney Pocock, Summer Scardigno, Jesse Venn

Goodwood Saints

Goal Kickers: Emma Whyte 2, Emma Chappill 1, Jessica Chyer 1

Best Players: Jessica Chyer, Madelyn Griffiths, Emma Fox, Grace Kemish, Zara Bowles

WWW.SAFOOTBALLER.COM.AU

Thank You to our
2025 Sponsors



Unrivalled outdoor warmth for sports fans
Continuous heat for home comfort.



Stay Warm, Stay Active with Happy Lap Co.

Experience reliable and stylish warmth
tailored for outdoor enthusiasts and those seeking lightweight comfort at home.
Our heated products ensure you can embrace your activities, whatever the weather brings.

www.happylapco.com

Contact us at sales@happylapco.com



HAPPY VALLEY HENLEY

PLAYED AT - HAPPY VALLEY OVAL

QUARTER BY QUARTER SCORES

First Quarter Henley 2.4 (16) v Happy Valley 2.0 (12) leading by 4 points

Second Quarter Henley 5.5 (35) v Happy Valley 2.2 (14) leading by 21 points

Third Quarter Henley 6.7 (43) v Happy Valley 2.4 (16) leading by 27 points

Fourth Quarter Henley 9.8 (62) v Happy Valley 2.4 (16) leading by 46 points

Henley and Happy Valley clashed in a game where Henley's consistent pressure and scoring power proved too much across four quarters. Happy Valley went into the game above the Sharks on the ladder. People anticipated a much closer contest. The Sharks are beginning to flex their muscles and look like the only side capable of defeating the Falcons in September.

The first quarter was relatively even, with both sides showing intent early. Henley edged ahead slightly, scoring 2.4 (16) to Happy Valley's 2.0 (12), giving the visitors a narrow 4-point lead at the first break.

In the second quarter, Henley began to take control of the contest. While Happy Valley managed only two behinds to move to 2.2 (14), Henley added 3.1 (19) to extend their lead to 21 points at halftime, with the scores at 5.5 (35) to 2.2 (14).

After the main break, Henley maintained their ascendancy. Despite Happy Valley adding just two more behinds, Henley continued to build their total, reaching 6.7 (43) by the end of the third quarter and taking a 27-point lead into the final term.

The final quarter saw Henley seal the game with another solid performance, adding 3.1 (19) to finish at 9.8 (62), while Happy Valley was held scoreless, ending the game at 2.4 (16). Henley claimed a dominant 46-point win, holding Happy Valley goalless for the final three quarters in a strong all-around team performance.

BEST PLAYERS

The best players for Happy Valley were Emily Smith, Patricia Kaupert, Lauren Bungey, Makyah Willis, and Brooke Clark. Best players for the Sharks were Hayley Conlon, Shannon Murphy, Erica Rowe, Eliza Cooper, and Demi Bates.

GOAL SCORERS

Goal scorers for Happy Valley included Jorja Hooper, who kicked two goals. Henley made a major contribution from Tegan Dunbar, who scored 5 goals. While Ellie Fixter booted 2. Demi Bates and Shannon Murphy contributed singles.



PEARL OF CANGGU

BALI VILLA
for a relaxing getaway

booking.listingsbali.com

@pearl_of_canggu

Pearl of Canggu - Bali Villa

airbnb.com/h/the-pearl-of-canggu





PAYNEHAM NU MORPHETTVILLE PARK

PLAYED AT - PAYNEHAM OVAL

QUARTER BY QUARTER SCORES

- First Quarter** Payneham NU 2.2 (14) v Morphettville Park 1.1 (7) leading by 7 points
Second Quarter Payneham NU 5.4 (34) v Morphettville Park 2.2 (14) leading by 20 points
Third Quarter Payneham NU 6.5 (41) v Morphettville Park 3.2 (20) leading by 21 points
Fourth Quarter Payneham NU 7.6 (48) v Morphettville Park 5.3 (33) leading by 15 points

Payneham NU and Morphettville Park met in a determined contest at Payneham Oval, with the home side managing to stay in control from start to finish to secure a 15-point win. The Falcons have taken all before them this season and sit in top spot, while the Roos sit in fourth position.

In the first quarter, Payneham NU opened strongly, slotting 2.2 (14) while keeping Morphettville Park to just 1.1 (7), taking a 7-point lead into the first break. The second quarter saw Payneham NU extend their margin. Adding three more goals, they pushed their total to 5.4 (34), while Morphettville Park could only manage another goal and a behind to sit at 2.2 (14), leaving them trailing by 20 points at halftime.

After the main break, Morphettville Park showed some signs of life, but Payneham NU kept control. The quarter ended with the home side ahead 6.5 (41) to 3.2 (20), maintaining a comfortable 21-point lead heading into the final term.

In the last quarter, Morphettville Park mounted a late push, scoring two quick goals to apply some pressure. However, Payneham NU responded with a steadying goal of their own and held on for the win. The final scores were Payneham NU 7.6 (48) to Morphettville Park 5.3 (33). It was a well-earned victory for Payneham NU, who led at every break and held off Morphettville Park's late charge to take the points at home.

BEST PLAYERS

The best players for Payneham NU were Zoe Proude, Chelsea Packer, Chloe Samuel, Stephanie Gibson, and Georgia Mee. For Morphettville Park, standouts included Tamsyn Morris, Jiarna Zerella, Brooke Trevena, Brooklyn Kraft, and Jorja Eldridge.

GOAL SCORERS

Goal scorers for Payneham NU were Chelsea Packer with five goals, along with Adrienne Davies and Chloe Samuel, who kicked one goal each. Morphettville Park's goal scorers included Brooklyn Kraft, Melinda Speechley, Caitlyn Swanson, Julia Watson, and Jiarna Zerella, each contributing one goal.



ADELAIDE PAINTING SERVICES

Professional | Flexible | Affordable



PKB

PAINTING SERVICES



CONTACT US

0404 539 369

PKBPAINTINGADELAIDE@GMAIL.COM

INTERIOR/EXTERIOR

Residential
Commercial
Industrial

EXPERT PAINTING FOR EVERY SETTING
QUALITY YOU CAN SEE



FOOTY TRIPS

BOOK YOUR TRIP
1800 252 719

info@footytrips.com.au | footytrips.com.au | [f](#) [@](#) [@footytrips](#)



FREE STUBBY HOLDERS

CAIRNS • GOLD COAST • AIRLIE BEACH • BYRON BAY

THE END OF SEASON TRIP SPECIALISTS

ADELAIDE • MELBOURNE • BRISBANE • MORE

LAYBY YOUR TRIP



NETTY TRIPS

BOOK YOUR TRIP
1800 954 504

info@nettytrips.com.au | nettytrips.com.au | [f](#) [@](#) [@nettytrips](#)



GOLDEN GROVE BROADVIEW

PLAYED AT - HARPERS FIELD

QUARTER BY QUARTER SCORES

First Quarter	Broadview 3.4 (22) v Golden Grove 0.1 (1) leading by 21 points
Second Quarter	Broadview 3.4 (22) v Golden Grove 0.1 (1) leading by 21 points
Third Quarter	Broadview 4.6 (30) v Golden Grove 2.2 (14) leading by 16 points
Fourth Quarter	Broadview 4.7 (31) v Golden Grove 4.2 (26) leading by 5 points

Golden Grove and Broadview clashed in a gritty, low-scoring encounter at Harpers Field. Broadview held on to claim a narrow 5-point victory despite a late surge from the home side. It was a game where the seventh-placed side played eighth, with the seventh-placed Tigers holding on for the win.

The first quarter saw Broadview get off to a strong start, slotting 3.4 (22) while holding Golden Grove to just a solitary behind. Their efficiency and forward pressure gave them a commanding 21-point lead at the first break. The second quarter was a defensive grind, with neither team able to add significantly to the scoreboard. Broadview failed to register a goal and remained at 3.4 (22), while Golden Grove couldn't improve on their score either, stuck at 0.1 (1). Broadview maintained its 21-point lead heading into halftime.

In the third term, Golden Grove finally found some momentum and began to chip away at the deficit, scoring two goals and a behind to bring their tally to 2.2 (14). Broadview responded with 1.2 (8), keeping their nose in front at 4.6 (30), but their lead was trimmed to 16 points.

Golden Grove continued their late push in the final quarter, adding two more goals to close the gap even further. However, Broadview managed a single behind to just hold on. The final score read Broadview 4.7 (31) to Golden Grove 4.2 (26), with Broadview narrowly escaping with the win. It was a gutsy effort from Golden Grove after a slow start, but Broadview's early dominance proved just enough to get them over the line.

BEST PLAYERS

The best players for Golden Grove were Amalie Rose Innes, Kelsi Ley, Sara Lauren Belkner, Madison Koop, and Hayley Hill. For Broadview, standouts included Brianna Arthur, Sasha Branson, Annabel Baker, Alana Dolling, and Liana Antonoli.

GOAL SCORERS

Goal scorers for Golden Grove were Kasey Irwin, Ayla Johnson, Kelsi Ley, and Dakota Whyte, each kicking one goal. Broadview's goal scorers were Kelis Jackson-Martin with two goals, along with Remy Grant and Amy Jones who added one goal each.



✓ PRESSURE CLEANING
✓ SOLAR PANEL CLEANING
✓ GUTTER CLEANING
SPECIALISING PRESSURE
CLEANING OF NETBALL
AND TENNIS COURTS

powerwashpro.com.au

TERRY@POWERWASHPRO.COM.AU





HECTORVILLE GOODWOOD SAINTS

PLAYED AT - DALY OVAL

QUARTER BY QUARTER SCORES

First Quarter	Goodwood Saints 2.5 (17) v Hectorville 0.1 (1) leading by 16 points
Second Quarter	Goodwood Saints 2.7 (19) v Hectorville 1.4 (10) leading by 9 points
Third Quarter	Goodwood Saints 3.8 (26) v Hectorville 2.5 (17) leading by 9 points
Fourth Quarter	Goodwood Saints 4.8 (32) v Hectorville 3.6 (24) leading by 8 points

Hectorville and Goodwood Saints battled it out in a tight and low-scoring affair at Daly Oval, with the Saints holding off a determined Hectorville outfit to come away with an 8-point win. The win pushed the Saints just in front of the Hounds on the premiership table. However, both clubs are in with a real chance of September action.

In the opening quarter, Goodwood Saints set the tone early, applying forward pressure and converting opportunities to post 2.5 (17). Hectorville, on the other hand, struggled to find their rhythm, only managing a single behind to trail by 16 points at the first break. The second quarter saw Hectorville settle into the contest. They began to move the ball more effectively and hit the scoreboard with 1.3 (9) for the term, bringing their total to 1.4 (10). Despite this, Goodwood Saints added a couple of behinds to stay ahead at 2.7 (19), maintaining a 9-point lead at halftime.

The third term continued the arm-wrestle, with both sides struggling to gain clear dominance. Hectorville added another goal and a behind, while the Saints replied with a goal of their own, inching their total to 3.8 (26). At the final change, Goodwood Saints led by just 9 points, with the game still up for grabs.

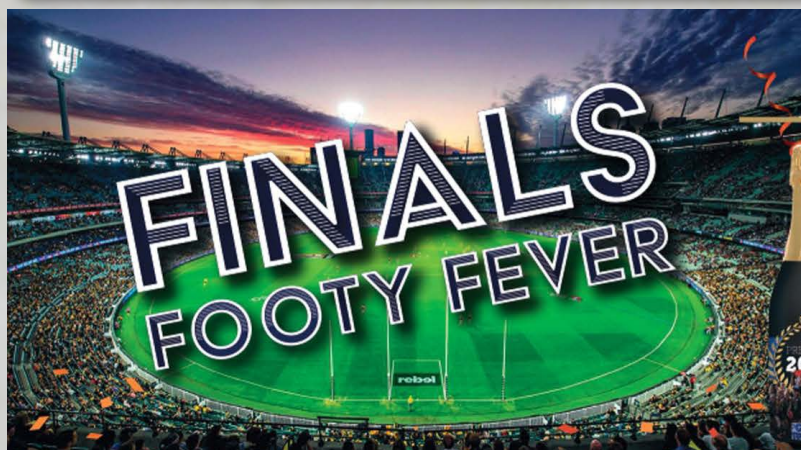
In the final quarter, Hectorville pushed hard to close the gap, kicking 1.1 (7), but Goodwood Saints did enough to hold them at bay with a steady goal to keep the margin in their favour. The final score saw Goodwood Saints victorious at 4.8 (32) to Hectorville's 3.6 (24). It was a gritty contest with both teams showing plenty of determination, but Goodwood Saints ultimately edged out Hectorville in a hard-fought match.

BEST PLAYERS

The best players for Hectorville were Rosie Boon, Tess McCormack, Sydney Pocock, Summer Scardigno, and Jesse Venn. For Goodwood Saints, standout performers included Jessica Chyer, Madelyn Griffiths, Emma Fox, Grace Kemish, and Zara Bowles.

GOAL SCORERS

Goal scorers for Hectorville were Taylah Roberts, who kicked two goals, and Grace Whittaker with one. Goodwood Saints did not register any goal scorers in this match.



FOR ALL YOUR CELEBRATIONS

Premierships | Presentation Nights
Coaches Gifts | Mad Mondays

**BEER, WINE, BUBBLES
2 DAY TURNAROUND**

Contact us on 08 7078 6186 or
email sales@printwrappack.com

TAC's apply
Two days turnaround from
artwork approval Mon-Fri

Must be 18+
Drink responsibly
Liquor License 52710206



My Loans  *My Planning*
My Tax *My Insurance*

ADELAIDE

**TAX RETURNS
HOME LOANS
ACCOUNTING & WAGES
BOOKKEEPING
COMPANIES TRUSTS SMSF
BUSINESS ASSISTANCE**

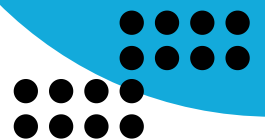
We bring you SOLUTIONS
and are here to help.

Talk To Us Today



1800 882 387

www.myloans.guru



DIVISION 1 Reserves

PREMIERSHIP LADDER

	Team	P	PTS	%	W	L	D	BYE	FOR	AGST
1	Goodwood Saints	8	12	84.52	6	2	0	0	579	106
2	Broadview	8	12	77.61	6	2	0	0	416	120
3	Morphettville Park	8	12	61.41	6	2	0	0	339	213
4	Henley	8	10	54.52	5	3	0	0	307	256
5	Happy Valley	8	8	49.81	4	4	0	0	274	276
6	Payneham NU	8	6	42.18	3	5	0	0	251	344
7	Hectorville	8	4	36.09	2	4	0	0	209	370
8	Golden Grove	8	0	1.94	0	7	0	0	14	704

LEADING GOALKICKERS

	Player	Team	Games	Goals
1	Christie Cooper	Hectorville	4	13
2	Tara Pirone	Goodwood Saints	6	11
3	Ava Pamminer	Broadview	6	9
4	Sarina Tran Nguyen	Broadview	8	8
5	Patricia Kottaridis	Goodwood Saints	5	8
6	Grace Kemish	Goodwood Saints	2	8
7	Kaily Buchalka	Morphettville Park	8	7
8	Millicent Johnson	Broadview	8	7

NEXT ROUND OF MATCHES

SAT 21 JUN - B-GRADE MATCHES BEGIN AT 1:30 PM UNLESS OTHERWISE NOTIFIED

Goodwood Saints v Payneham NU
Henley v Golden Grove
Morphettville Park v Happy Valley
Broadview v Hectorville

Goodwood Oval
Henley Memorial Oval
Kellett Reserve Oval
04:45 PM, Broadview Oval

THE SOUTH AUSTRALIAN
FOOTBALLER

**SOUTH
AUSTRALIA'S
PREMIER
FOOTBALL
PUBLICATIONS**

**COVERING ALL
FOOTBALL ACROSS
SOUTH AUSTRALIA**

- AFL • SANFL
- AMATEURS
- WOMEN'S
- COUNTRY

THE SOUTH AUSTRALIAN
FOOTBALLER



FOLLOW US ON SOCIAL MEDIA

DIVISION 1 Reserves

THE FINAL SCOREBOARD

Happy Valley 3.1-19
Henley 8.9-57

Happy Valley

Goal Kickers: Alannah Rochow 1, Kristy Rochow 1, Jackie Williams 1

Best Players: Sarah Owen, Alannah Rochow, Kristy Moore, Lianna Trueman, Kristy Rochow

Henley

Goal Kickers: Georgie Blades 2, Bianca Ramsey 2, Zani Bates 1, Gemma Lowick 1, Sophie Brotherton 1, Georgia Rugari 1

Best Players: Ella Godlevsky, Bianca Ramsey, Charlotte Godlevsky, Georgie Blades, Zani Bates

Payneham NU 0.4-4
Morphettville Park 5.9-39

Payneham NU

Goal Kickers: –

Best Players: Kelly Vaughan, Emma Cornish, Matilda Harris, Luana Calo, Delta Venning

Morphettville Park

Goal Kickers: Charlotte Dawe 2, Lauren Hegarty 1, Elizabeth Probyn-Shingles 1, Isla Taylor 1

Best Players: Sheba Miller, Gema Harvey, Caitlin Adams, Charlotte Dawe, Monique Van Der Heyden

Golden Grove 0.0-0
Broadview 10.18-78

Golden Grove

Goal Kickers: –

Best Players: Kirra Lebessis, Charlotte Glen, Emma Smethurst, Chelsea Dand, Megan Hosking

Broadview

Goal Kickers: Millicent Johnson 3, Eilish Doyle 2, Ella Molloy 2, Kate O'Dea 2, Sarina Tran Nguyen 1

Best Players: Órlaith Walsh, Astrid-Marie Powell, Madeline Bennett, Sarina Tran Nguyen, Eilish Doyle

Hectorville 1.0-6
Goodwood Saints 11.13-79

Hectorville

Goal Kickers: Isabelle Phillips 1

Best Players: Georgia Potter, Tahlia Scipioni, Tahlia Piening, Amanda Ferrari, Ashley Rowan

Goodwood Saints

Goal Kickers: Jacqui Borgas 2, Tayla Wilkinson 2, Zara Dirk 1, Patricia Kottaridis 1, Carly Payne 1, Tara Pirone 1, Lily Tennant 1, Kayla Wilkie 1

Best Players: Jacqui Borgas, Tayla Wilkinson, Brianna Pullan, Tara Pirone, Ashley Wojcik

WWW.SAFOOTBALLER.COM.AU



REVIVING HOMES ONE REPAIR AT A TIME

Delivering top-quality plastering services for both residential and commercial projects throughout Adelaide.

WWW.RAECPLASTERBOARDS.COM.AU



Call Us 24/7
(08) 8104 9134



Email Us for a Quote
sales@raecplasterboards.com.au





Decor Dreams
HAHNDORF ART GALLERY

GALLERY OPEN

49 Mount Barker Road, Hahndorf, SA

Phone: (08) 8121 4415

www.decor dreams.com.au





HAPPY VALLEY HENLEY

PLAYED AT - HAPPY VALLEY OVAL

QUARTER BY QUARTER SCORES

First Quarter	Henley 4.4 (28) v Happy Valley 2.0 (12) leading by 16 points
Second Quarter	Henley 5.4 (34) v Happy Valley 3.0 (18) leading by 16 points
Third Quarter	Henley 8.8 (56) v Happy Valley 3.1 (19) leading by 37 points
Fourth Quarter	Henley 8.9 (57) v Happy Valley 3.1 (19) leading by 38 points

Happy Valley hosted Henley in what turned out to be a one-sided affair at Happy Valley Oval, with Henley asserting their dominance from the outset and maintaining control throughout the match.

In the first quarter, Henley made an early statement, kicking 4.4 (28) to Happy Valley's 2.0 (12), taking a 16-point lead into the first break. Their accuracy in front of goal and midfield pressure set the tone early. The second quarter saw the game slow down slightly in scoring, but Henley continued to keep their nose in front, adding another goal to their tally while keeping Happy Valley to just a single goal. At halftime, Henley led 5.4 (34) to 3.0 (18), extending their lead to 16 points.

The third quarter proved decisive as Henley broke the game open. They piled on three unanswered goals and a couple of behinds, stretching their lead significantly. Happy Valley managed only a single behind in the term, with the scoreboard reading 8.8 (56) to 3.1 (19) at the final change — a commanding 37-point lead to Henley.

In the final quarter, scoring dried up for both sides. Henley added just one more behind, while Happy Valley was unable to register any additional score. The match ended with Henley claiming a comfortable 38-point win, 8.9 (57) to 3.1 (19). Henley's strong start and consistent pressure across all four quarters proved too much for Happy Valley, who struggled to generate forward momentum after halftime.

BEST PLAYERS

The best players for Happy Valley were Sarah Owen, Alannah Rochow, Kristy Moore, Lianna Trueman, and Kristy Rochow. For Henley, standout performers included Ella Godlevsky, Bianca Ramsey, Charlotte Godlevsky, Georgie Blades, and Zani Bates.

GOAL SCORERS

Goal scorers for Happy Valley were Alannah Rochow, Kristy Rochow, and Jackie Williams, each contributing one goal. Henley's goal scorers included Georgie Blades and Bianca Ramsey with two goals each, while Zani Bates, Gemma Lowick, Sophie Brotherton, and Georgia Rugari each added one.



RITA'S
Bar & Restaurant

69-71 MELBOURNE STREET, NORTH ADELAIDE

08 7134 2985 | ritasbarandrestaurant.com | info@ritasrestaurant.com.au



PAYNEHAM NU MORPHETTVILLE PARK

PLAYED AT - PAYNEHAM OVAL

QUARTER BY QUARTER SCORES

First Quarter	Morphettville Park 1.4 (10) v Payneham NU 0.2 (2) leading by 8 points
Second Quarter	Morphettville Park 1.7 (13) v Payneham NU 0.3 (3) leading by 10 points
Third Quarter	Morphettville Park 2.7 (19) v Payneham NU 0.3 (3) leading by 16 points
Fourth Quarter	Morphettville Park 5.9 (39) v Payneham NU 0.4 (4) leading by 35 points

Payneham NU and Morphettville Park met in a challenging contest marked by defensive pressure and tough scoring conditions. The match saw Morphettville Park gradually build a lead as Payneham NU struggled to find avenues to goal.

In the opening quarter, Morphettville Park got the early jump, slotting 1.4 (10) while holding Payneham NU to just two behinds. The visitors took an 8-point lead into the first break. The second quarter was another tight affair. Morphettville Park added three more behinds to move to 1.7 (13), while Payneham NU managed just one more point to trail 3–13 at halftime. Neither side could find a consistent scoring rhythm, with the contest bogged down between the arcs.

The third quarter saw little change in momentum. Payneham NU failed to convert any majors once again, remaining on 0.3 (3). Morphettville Park, however, added another goal and pulled away slightly, leading 2.7 (19) to 0.3 (3) by the final change.

In the last quarter, Morphettville Park found their attacking groove, kicking three straight goals to break the game open. Payneham NU added just one behind for the term and ultimately failed to kick a goal all day. The match finished with Morphettville Park claiming a comfortable 35-point victory, 5.9 (39) to 0.4 (4). It was a frustrating afternoon for Payneham NU, who couldn't capitalise on their limited opportunities, while Morphettville Park's patience and defensive pressure paid off in the end.

BEST PLAYERS

The best players for Payneham NU were Kelly Vaughan, Emma Cornish, Matilda Harris, Luana Calo, and Delta Venning. For Morphettville Park, standout performers included Sheba Miller, Gema Harvey, Caitlin Adams, Charlotte Dawe, and Monique Van Der Heyden.

GOAL SCORERS

Morphettville Park's goal scorers were Charlotte Dawe with two goals, and Lauren Hegarty, Elizabeth Probyn-Shingles, and Isla Taylor each contributing one. Payneham NU did not register any goal scorers in this match.



CAR RENTAL SERVICE

DISCOVER YOUR IDEAL CAR TODAY

- Wide range of vehicles
- Easy booking process



5 George St
Thebarton

WWW.SCORPIORIDES.COM.AU

0482 058 137
scorpiorides9@gmail.com



\$95
OIL
SERVICE



CAR
REPAIRS &
SERVICES TOP-QUALITY

DRIVING EXCELLENCE THROUGH
QUALITY REPAIRS AND SERVICES



CURRY n HURRY

The Indian Flavor Express!

INDULGE IN TIMELESS INDIAN FLAVORS



Come get your
flavor fix at any
of our locations!

www.currynhurry.com.au

ADELAIDE CITY

📍 121 West Terrace,
Adelaide

☎ (08) 8221 5927

PROSPECT

📍 90-92 Main N Rd,
Prospect

☎ (08) 7001 9928

BLACKWOOD

📍 3/180 Main Rd
Blackwood

☎ (08) 8221 5927



GOLDEN GROVE BROADVIEW

PLAYED AT - HARPERS FIELD

QUARTER BY QUARTER SCORES

First Quarter	Broadview 3.4 (22) v Golden Grove 0.0 (0) leading by 22 points
Second Quarter	Broadview 7.7 (49) v Golden Grove 0.0 (0) leading by 49 points
Third Quarter	Broadview 10.15 (75) v Golden Grove 0.0 (0) leading by 75 points
Fourth Quarter	Broadview 10.18 (78) v Golden Grove 0.0 (0) leading by 78 points

Golden Grove and Broadview clashed at Harpers Field in a match that proved to be one-sided from start to finish, with Broadview dominating all four quarters.

The opening term saw Broadview take immediate control, kicking 3.4 (22) while keeping Golden Grove scoreless. Their strong start gave them a 22-point buffer heading into the first break.

In the second quarter, Broadview continued their pressure around the contest and extended their lead significantly. They added another four goals to take their tally to 7.7 (49), while Golden Grove still struggled to find any scoring opportunities, remaining on 0.0 (0) at halftime.

The third quarter followed a similar pattern, with Broadview piling on more scoreboard pressure. They kicked three more goals and a number of behinds to move to 10.15 (75), maintaining complete control of the match. Golden Grove remained goalless and without a score at the final break.

Despite Broadview only adding three behinds in the final term, their earlier dominance had sealed the result. Golden Grove was held scoreless for the entire game, while Broadview finished with 10.18 (78), securing a 78-point victory in emphatic fashion.

It was a commanding display by Broadview, who executed a comprehensive four-quarter performance both offensively and defensively, leaving Golden Grove with plenty to reflect on.

BEST PLAYERS

The best players for Golden Grove were Kirra Lebessis, Charlotte Glen, Emma Smethurst, Chelsea Dand, and Megan Hosking. For Broadview, standout performers included Órlaith Walsh, Astrid-Marie Powell, Madeline Bennett, Sarina Tran Nguyen, and Eilish Doyle.

GOAL SCORERS

Broadview's goal scorers were Millicent Johnson with three goals, while Eilish Doyle, Ella Molloy, and Kate O'Dea each kicked two, and Sarina Tran Nguyen added one. Golden Grove did not register any goal scorers in this match.



Win Big Just by Listing Your Space

Got extra space in your garage, shed, or spare room?

5 CHANCES TO WIN \$150



Free to list

No cost to get started



Win CASH!

Every listing is an entry into the draw!



Any size space welcome

Big or small, it all counts



Competition ends after 50th space listed.

Winners announced on our socials - follow us to stay updated!



Visit space-mates.com.au to get started!

Space
Mates.





HECTORVILLE GOODWOOD SAINTS

PLAYED AT - DALY OVAL

QUARTER BY QUARTER SCORES

First Quarter	Goodwood Saints 2.1 (13) v Hectorville 0.0 (0) leading by 13 points
Second Quarter	Goodwood Saints 4.3 (27) v Hectorville 0.0 (0) leading by 27 points
Third Quarter	Goodwood Saints 9.8 (62) v Hectorville 0.0 (0) leading by 62 points
Fourth Quarter	Goodwood Saints 11.13 (79) v Hectorville 1.0 (6) leading by 73 points

Hectorville and Goodwood Saints went head-to-head in a match that was dominated from the outset by the visiting side. Played at Daly Oval, the game saw Goodwood Saints assert their authority early and maintain control throughout.

In the first quarter, Goodwood Saints got off to a solid start, kicking 2.1 (13), while Hectorville struggled to make any forward impact and remained scoreless. The second quarter followed a similar trend, with Goodwood Saints continuing to apply scoreboard pressure, adding another two goals and taking their total to 4.3 (27). Hectorville, meanwhile, still couldn't register a score by halftime, trailing by 27 points.

After the main break, Goodwood Saints surged ahead with their most dominant quarter. They piled on five unanswered goals and three behinds, finishing the third term with a commanding 9.8 (62) to 0.0 (0) lead. Hectorville remained without a score and found it difficult to stem the Saints' momentum.

In the final quarter, Hectorville finally managed to hit the scoreboard with a late goal, avoiding a scoreless finish. However, the damage had already been done, and Goodwood Saints capped off a complete performance with 11.13 (79) to Hectorville's 1.0 (6), running away with a 73-point victory. It was a clinical display by Goodwood Saints, who controlled the game from the first bounce and never let up.

BEST PLAYERS

The best players for Hectorville were Georgia Potter, Tahlia Scipioni, Tahliya Piening, Amanda Ferrari, and Ashley Rowan. For Goodwood Saints, standout performers included Jacqui Borgas, Tayla Wilkinson, Brianna Pullan, Tara Pirone, and Ashley Wojcik.

GOAL SCORERS

Isabelle Phillips was the lone goal scorer for Hectorville. Goodwood Saints shared the scoring load with Jacqui Borgas and Tayla Wilkinson both kicking two goals each, while Zara Dirk, Patricia Kottaridis, Carly Payne, Tara Pirone, Lily Tennant, and Kayla Wilkie each added one.



Spisso Pools

Construction & Restoration

- Swimming Pool Construction
- Custom Pool Design
- Swimming Pool Restorations
- Glass Fencing
- Filtration and Cleaning Systems
- Landscaping and Surrounding Area



Contact: 0414 620 635
spissopools@gmail.com

spissopools.wixsite.com/website



COMPLETE PLAN MANAGEMENT
SERVICES

**Family owned and operated
since 2017**

- Fast efficient payments
- Free mobile app
- We understand South Australian participants because we live here too!

YOUR CHOICE, YOUR CONTROL

Ph: 08 8185 0003

email:

enquiries@completeplanmanagement.org





MLG

**ELECTRICAL
& SOLAR**

SUPPLYING *FREE POWER ACROSS SOUTH AUSTRALIA

15% OFF

**INSTALLATION
FOR ALL MEMBERS**

SOLAR INSTALLATIONS *FROM \$3699.00

SOLAR & BATTERY INSTALLS FROM \$7999.00

ADVANTAGES OF SOLAR ENERGY:

- ✓ Long-Term Savings
- ✓ Energy Independence
- ✓ Renewable & Sustainable

GET IN TOUCH:

 **0411 141 995** | 08 8352 4063

 www.mlgelectrical.com



DIVISION 2

PREMIERSHIP LADDER

	Team	P	PTS	%	W	L	D	BYE	FOR	AGST
1	Angle Vale	8	16	73.58	8	0	0	0	482	173
2	Tea Tree Gully	8	14	77.76	7	1	0	0	598	171
3	Hope Valley	8	8	49.45	4	4	0	0	228	233
4	Brighton Bombers	8	8	43.94	4	3	0	0	254	324
5	Old Ignatians	8	6	42.55	3	5	0	0	220	297
6	Lockleys	8	6	35.63	3	5	0	0	196	354
7	Eastern Park	8	4	43.85	2	6	0	0	264	338
8	SMOSH West Lakes	8	2	23.00	1	7	0	0	150	502

LEADING GOALKICKERS

	Player	Team	Games	Goals
1	Tamara Clapton	Angle Vale	8	20
2	Laura Mitchell	Tea Tree Gully	8	19
3	Taylan Ralph	Eastern Park	7	15
4	Taylah Pearson	Tea Tree Gully	4	13
5	Lillian Thomas	Tea Tree Gully	7	10
6	Fiona Clancey	Brighton Bombers	5	10
7	Bridie Lukich	Angle Vale	7	9
8	Molly Ingram	Old Ignatians	8	8

NEXT ROUND OF MATCHES

SAT 21 JUN - A-GRADE MATCHES BEGIN AT 3:15 PM UNLESS OTHERWISE NOTIFIED

Tea Tree Gully v Lockleys	Pertaringa Oval
Old Ignatians v SMOSH West Lakes	Park 25
Angle Vale v Hope Valley	Angle Vale Oval
Brighton Bombers v Eastern Park	04:45 PM, Brighton Oval

THE SOUTH AUSTRALIAN
FOOTBALLER

**SOUTH AUSTRALIA'S
PREMIER FOOTBALL
PUBLICATIONS**

**ADVERTISING
SUPER SPECIAL
ADVERTISE FOR
ONLY**

**\$6 PER WEEK
IN OUR MAGAZINES**

**PHONE LUKE ON
0404 846 412 AND
MENTION 'SAF SPECIAL'**

THE SOUTH AUSTRALIAN
FOOTBALLER



FOLLOW US ON SOCIAL MEDIA

DIVISION 2

THE FINAL SCOREBOARD

Hope Valley 3.8-26

Old Ignatians 2.2-14

Hope Valley

Goal Kickers: Taryn Lozoraitis 1, Tyra Pix 1, Elizabeth Rowe 1

Best Players: Emily Habgood, Tiana Tattersall, Alicia Wordingham, Alicia Botten, Shantelle Wise

Old Ignatians

Goal Kickers: Lily McDonald 2

Best Players: Tahlia Cua, Alice Winter, Phoebe Edwards, Harriet Mee, Lily McDonald

Lockleys 0.3-3

Angle Vale 15.12-102

Lockleys

Goal Kickers: –

Best Players: Grace Raeburn, Taylor McAulay, Aimee Herriman, Alyssa Caputo, Meaghan Haniford

Angle Vale

Goal Kickers: Brooklyn McIver 5, Tamara Clapton 3, Bridie Lukich 2, Charlotte Maurits 2, Carrie-Anne Mewett 1, Hannah Pavlovich 1, Abbey Scheer 1

Best Players: Charlotte Maurits, Brooklyn McIver, Brittany Perry, Amani Mustanow, Tamara Clapton

SMOSH West Lakes 4.2-26

Brighton Bombers 5.2-32

SMOSH West Lakes

Goal Kickers: Asha Gooley 3, Bronwyn Davey 1

Best Players: Charlotte Dolan, Bridie Dolan, Kelliah Maher, Bronwyn Davey, Kristina Shepherd

Brighton Bombers

Goal Kickers: Lily Grinham 1, Evelyn Holt 1, Monika Ney 1, Ella Ramsay 1, Lara Ward 1

Best Players: Mia Brown, Dakota Kendall, Lara Ward, Hannah Muscat, Lily Hayes

Eastern Park 2.8-20

Tea Tree Gully 7.7-49

Eastern Park

Goal Kickers: Alicia Cotton 1, Shae Platts 1

Best Players: Sophia Keane, Alicia Butler, Khiara Lindsay, Teirah Lee, Alicia Cotton

Tea Tree Gully

Goal Kickers: Tamioka Anderson 2, Laura Mitchell 2, Kyah Jaffer 1, Indiana Nelson 1, Summer Nelson 1

Best Players: Summer Nelson, Nicola Heffernan, Kyah Jaffer, Matilda Lloyd, Tamioka Anderson

WWW.SAFOOTBALLER.COM.AU



STEVE BARNS FINANCE

stevebarnsfinance.com.au



• Home Loans • First Home Buyers • Refinance • Investments • Car Loans •

HELPING YOU KICK GOALS OFF THE FIELD

Steve Barns Finance is a local SA small business focused on helping you achieve your home ownership dreams.
Talk to your local mortgage professional today.

Call: **0408 756 486** Email: **steve@stevebarnsfinance.com.au**

Start your own online business from the comfort of your home
- anytime, anywhere - even while keeping your current job!

CO DIGITAL CONSULTING



Group

OUR SERVICES

No experience needed
Work anytime, from anywhere
Flexible work-from-home setup
Step-by-step training
and full guidelines
24/7 support system
Be your own boss
and build a better future



*Empowering everyday people to
launch their own digital businesses.*

BOOK NOW

+61425-357-413



www.mydigitalconsultant.co



HOPE VALLEY OLD IGNATIANS

PLAYED AT - HOPE VALLEY SPORTING CLUB

QUARTER BY QUARTER SCORES

First Quarter Hope Valley 2.2 (14) v Old Ignatians 0.0 (0) leading by 14 points

Second Quarter Hope Valley 2.5 (17) v Old Ignatians 2.1 (13) leading by 4 points

Third Quarter Hope Valley 2.7 (19) v Old Ignatians 2.1 (13) leading by 6 points

Fourth Quarter Hope Valley 3.8 (26) v Old Ignatians 2.2 (14) leading by 12 points

Hope Valley and Old Ignatians clashed in a low-scoring but hard-fought match at Hope Valley Oval, with both teams displaying strong defensive efforts throughout the game.

In the first quarter, Hope Valley got off to a promising start, applying early scoreboard pressure with 2.2 (14), while holding Old Ignatians scoreless. This gave the home side a 14-point lead heading into the second term.

Old Ignatians responded in the second quarter, finally breaking through for their first goals and behinds, scoring 2.1 (13). However, Hope Valley added three behinds to their tally, maintaining a slim lead of 4 points at halftime with the score at 2.5 (17) to 2.1 (13).

The third quarter turned into a defensive slog, with neither team able to create much forward momentum. Hope Valley added just two behinds, edging ahead slightly to 2.7 (19), while Old Ignatians remained scoreless for the term. Hope Valley extended their lead to 6 points at the final break.

In the last quarter, Hope Valley managed to add another goal and a behind to seal the win, finishing on 3.8 (26). Old Ignatians added just one more behind, finishing on 2.2 (14). Despite Old Ignatians' spirited fightback after a scoreless first term, Hope Valley's early advantage proved too much to overcome. Hope Valley emerged 12-point victors in what was a gritty and determined contest from both sides.

BEST PLAYERS

The best players for Hope Valley were Emily Habgood, Tiana Tattersall, Alicia Wordingham, Alicia Botten, and Shantelle Wise. For Old Ignatians, strong performances came from Tahlia Cua, Alice Winter, Phoebe Edwards, Harriet Mee, and Lily McDonald.

GOAL SCORERS

Goal scorers for Hope Valley were Taryn Lozoraitis, Tyra Pix, and Elizabeth Rowe, each contributing one goal. Lily McDonald was the sole goal scorer for Old Ignatians, finishing with two goals.





AUSTRALIAN - ASIAN - EUROPEAN FUSION

South of the CBD, located at the beginning of King William Road, Unley
Open for dinner Wednesday to Saturday and Lunch Wednesday to Friday.

Visit www.sthrestaurant.com.au

TO BOOK NOW!

STH Restaurant
Spectacular interior by world-class designer Adrian Condina

A MUST-VISIT RESTAURANT






LOCKLEYS ANGLE VALE

PLAYED AT - LOCKLEYS OVAL

QUARTER BY QUARTER SCORES

First Quarter	Angle Vale 5.3 (33) v Lockleys 0.0 (0) leading by 33 points
Second Quarter	Angle Vale 9.6 (60) v Lockleys 0.1 (1) leading by 59 points
Third Quarter	Angle Vale 10.9 (69) v Lockleys 0.2 (2) leading by 67 points
Fourth Quarter	Angle Vale 15.12 (102) v Lockleys 0.3 (3) leading by 99 points

Lockleys hosted Angle Vale in a one-sided affair, where Angle Vale showcased their dominance from start to finish to claim a commanding victory.

In the opening quarter, Angle Vale came out firing, putting five goals and three behinds on the board to take a strong early lead. Lockleys struggled to get into the game and were held scoreless, with the scoreboard reading 5.3 (33) to 0.0 (0) in favour of the visitors.

The second quarter saw Angle Vale continue their control of the match. They extended their lead with another four goals and three behinds, while Lockleys could only manage a single behind. At halftime, the margin had blown out to 59 points, with Angle Vale leading 9.6 (60) to 0.1 (1).

In the third quarter, Lockleys showed more effort but couldn't convert it into goals, adding just one more behind to their tally. Angle Vale slowed slightly in front of goal but still pushed further ahead with one goal and three behinds. By the end of the third quarter, the score stood at 10.9 (69) to 0.2 (2).

The final term saw Angle Vale finish strongly, adding five more goals and three behinds. Lockleys finally managed to get a goal on the board, along with another behind, but it was far too late. The final scores read Angle Vale 15.12 (102) to Lockleys 0.3 (3), sealing a dominant 99-point win. It was a comprehensive performance from Angle Vale, who were relentless throughout the match and never gave Lockleys a chance to recover.

BEST PLAYERS

The best players for Lockleys were Grace Raeburn, Taylor McAulay, Aimee Herriman, Alyssa Caputo, and Meaghan Haniford. Angle Vale's top performers included Charlotte Maurits, Brooklyn McIver, Brittany Perry, Amani Mustanow, and Tamara Clapton.

GOAL SCORERS

While Lockleys didn't register any goal scorers in this match, Angle Vale had a strong showing up forward with Brooklyn McIver leading the charge with five goals. Tamara Clapton followed with three, while Bridie Lukich and Charlotte Maurits each added two. Carrie-Anne Mewett, Hannah Pavlovich, and Abbey Scheer chipped in with one goal apiece.



JAPANESE INDIGO SHIBORI DYEING

design, dye and discover

An immersive workshop to
learn traditional techniques
and re-style your wardrobe.
Inclusive of all materials.



STUDIO RAGS





ClubDucks

A club with 10 sponsors
and 10 tasks per sponsor
means 100 tasks for
someone to handle.



**Let the ducks help with the
heavy lifting at your club**

www.clubducks.au



SMOSH WEST LAKES BRIGHTON BOMBERS

PLAYED AT - SMOSH WEST LAKES FC

QUARTER BY QUARTER SCORES

- First Quarter** Brighton Bombers 2.1 (13) v SMOSH West Lakes 1.0 (6) leading by 7 points
Second Quarter Brighton Bombers 3.2 (20) v SMOSH West Lakes 2.1 (13) leading by 7 points
Third Quarter Brighton Bombers 4.2 (26) v SMOSH West Lakes 3.2 (20) leading by 6 points
Fourth Quarter Brighton Bombers 5.2 (32) v SMOSH West Lakes 4.2 (26) leading by 6 points

SMOSH West Lakes and Brighton Bombers clashed in a tight, low-scoring encounter that went down to the wire at West Lakes. The match was a battle of defensive pressure and efficiency, with both sides struggling to break free on the scoreboard.

In the opening quarter, Brighton Bombers edged ahead with a solid start, kicking 2.1 (13) to SMOSH West Lakes' 1.0 (6), giving the visitors a 7-point lead at the first break. The second quarter remained evenly contested, with both teams adding one goal and one behind to their tally. Brighton maintained their lead at halftime, with the scoreboard reading 3.2 (20) to SMOSH West Lakes' 2.1 (13), still a 7-point margin.

SMOSH West Lakes gained a slight upper hand in general play during the third term, adding another goal and a behind to draw level. Brighton, however, managed just six points for the quarter. At three-quarter time, the scores were locked at 4.2 (26) apiece, setting up an exciting final term.

In the last quarter, Brighton found a way to break the deadlock, scoring a crucial goal and holding SMOSH West Lakes goalless. That final push proved enough to seal the win, with Brighton finishing 5.2 (32) to Smosh West Lakes' 4.2 (26), securing a hard-fought 6-point victory. It was a gritty contest from both sides, with Brighton doing just enough to come away with the win in a game where every score counted.

BEST PLAYERS

The best players for SMOSH West Lakes were Charlotte Dolan, Bridie Dolan, Kelliah Maher, Bronwyn Davey, and Kristina Shepherd. For Brighton Bombers, standout performers included Mia Brown, Dakota Kendall, Lara Ward, Hannah Muscat, and Lily Hayes.

GOAL SCORERS

Goal scorers for SMOSH West Lakes were Asha Gooley, who kicked three, and Bronwyn Davey with one. Brighton Bombers had three individual goal scorers in Evelyn Holt, Ella Ramsay, and Lara Ward, each contributing one goal.




THE NAIL SHOP

Professional Affordable Nail Products

www.thenailshop.com.au

08 8263 3636 or 0416 157 087

Click & Collect in Holden Hill

Nail supplies for hobbyists and professionals





EASTERN PARK TEA TREE GULLY

PLAYED AT - DWIGHT RESERVE

QUARTER BY QUARTER SCORES

First Quarter	Tea Tree Gully 1.3 (9) v Eastern Park 1.3 (9) scores level
Second Quarter	Tea Tree Gully 3.3 (21) v Eastern Park 1.6 (12) leading by 9 points
Third Quarter	Tea Tree Gully 4.5 (29) v Eastern Park 1.7 (13) leading by 16 points
Fourth Quarter	Tea Tree Gully 7.7 (49) v Eastern Park 2.8 (20) leading by 29 points

Eastern Park and Tea Tree Gully went head-to-head in a competitive match that saw momentum shift steadily in favour of the visitors as the game progressed.

The first quarter was a tightly contested affair, with both sides matching each other goal for goal. Eastern Park and Tea Tree Gully each registered 1.3 (9), leaving the scores level at the first break. In the second quarter, Tea Tree Gully began to edge ahead. They added two goals while keeping Eastern Park goalless, despite the home side adding three behinds. At halftime, Tea Tree Gully held a 9-point lead with the scoreboard reading 3.3 (21) to 1.6 (12).

The third quarter followed a similar pattern, with Tea Tree Gully continuing to apply scoreboard pressure. Eastern Park struggled to convert, managing only one more behind, while Tea Tree Gully extended their lead to 16 points at the final change, leading 4.5 (29) to 1.7 (13).

In the final term, Tea Tree Gully put the game beyond doubt. They piled on three unanswered goals, sealing a strong finish, while Eastern Park managed just one goal for the quarter. The final score saw Tea Tree Gully victorious 7.7 (49) to Eastern Park's 2.8 (20), wrapping up a well-earned 29-point win. Tea Tree Gully's composed performance after quarter time proved the difference, as they gradually broke down Eastern Park's resistance with efficient ball use and stronger forward entries.

BEST PLAYERS

The best players for Eastern Park were Sophia Keane, Alicia Butler, Khiara Lindsay, Teirah Lee, and Alicia Cotton. For Tea Tree Gully, standout performers included Summer Nelson, Nicola Heffernan, Kyah Jaffer, Matilda Lloyd, and Tamioka Anderson.

GOAL SCORERS

Goal scorers for Eastern Park were Alicia Cotton and Shae Platts, who each kicked one goal. Tea Tree Gully's goal scorers were Tamioka Anderson and Laura Mitchell with two goals each, while Kyah Jaffer, Indiana Nelson, and Summer Nelson each contributed one goal.



**OPTICAL
SUPERSTORE**



**2 PAIRS
OF SINGLE
VISION
GLASSES
FROM \$192***

*T&C's - See in-store or online for more details

OPTICALSUPERSTORE.COM.AU

Hotels | Schools | Shopping Centres | Child Care Centres | Offices | Work Shops | & More

 Cinderella's



CINDERELLA'S COMMERCIAL CLEANING

Supporting Local Footy for decades
South Australian Juniors, Women's & Men's Leagues!



CALL NOW (08) 8271 6677



Office
Cleaning



Antiviral
Disinfection



High Pressure
Cleaning



Stripping and
Sealing

**Our commercial cleaning services are
always designed around your company's
particular janitorial needs.**

www.cinderellas.com.au

We offer a free no obligation quote.
Register your enquiry today.

DIVISION 3

PREMIERSHIP LADDER

	Team	P	PTS	%	W	L	D	BYE	FOR	AGST
1	Port District	8	14	81.83	7	1	0	0	482	107
2	Mitcham	8	12	73.13	6	2	0	0	343	126
3	Scotch OC	8	10	58.69	5	3	0	0	270	190
4	Westminster OS	8	10	58.07	5	3	0	0	277	200
5	Pembroke OS	8	6	50.27	3	5	0	0	274	271
6	Adelaide University	8	6	40.61	3	5	0	0	186	272
7	Flinders Park	8	6	35.66	3	5	0	0	168	303
8	Pulteney	8	0	7.92	0	8	0	0	50	581

LEADING GOALKICKERS

	Player	Team	Games	Goals
1	Jasmine White	Port District	7	17
2	Tashara Wilson	Westminster OS	7	13
3	Amber Hopkins	Pembroke OS	7	11
4	Isabella Jawadi	Mitcham	6	11
5	Laura Phair	Scotch OC	6	10
6	Indira Panelli	Pembroke OS	6	10
7	Siena Shields	Mitcham	8	9
8	Alicia Mcneill	Flinders Park	8	8

NEXT ROUND OF MATCHES

SAT 21 JUN - A-GRADE MATCHES BEGIN AT 3:15 PM UNLESS OTHERWISE NOTIFIED

Pulteney v Port District	10:30 AM, Park 20
Westminster OS v Pembroke OS	02:15 PM, Westminster School
Adelaide University v Mitcham	Park 12 University Oval
Flinders Park v Scotch OC	04:45 PM, Flinders Park Oval

THE SOUTH AUSTRALIAN
FOOTBALLER

**SOUTH AUSTRALIA'S
PREMIER FOOTBALL
PUBLICATIONS**

**ADVERTISING
SUPER SPECIAL
ADVERTISE FOR
ONLY**

**\$6 PER WEEK
IN OUR MAGAZINES**

**PHONE LUKE ON
0404 846 412 AND
MENTION 'SAF SPECIAL'**

THE SOUTH AUSTRALIAN
FOOTBALLER



FOLLOW US ON SOCIAL MEDIA

DIVISION 3

THE FINAL SCOREBOARD

Port District 8.14-62

Scotch OC 1.0-6

Port District

Goal Kickers: Jasmine White 5, Sailor Cowen 1, Sinead Saunders 1, Brydie Van Dijk 1

Best Players: Jasmine White, Jasmin Turner, Sinead Saunders, Sailor Cowen, Alicia Gaffney

Scotch OC

Goal Kickers: Amy Kaesler 1

Best Players: Poppy Cartwright, Ella Pascoe, Ella Anderson, Annabel Kidman, Mollie Willson

Mitcham 1.4-10

Westminster OS 2.9-21

Mitcham

Goal Kickers: Isabella Jawadi 1

Best Players: Laura Wilsdon, Keeley Fahey, Amy O'Leary, Dionisia Papageorgiou, Gemma Monaghan

Westminster OS

Goal Kickers: Jacinda Benbolt 1, Tashara Wilson 1

Best Players: Kendall Howell, Bailey Kramer, Samantha McKenzie, Caitlin Walter, Sheridan Howell

Flinders Park 4.9-33

Adelaide University 1.3-9

Flinders Park

Goal Kickers: Milli Gentle 2, Natasha Fazzalari 1, Tylah Grummett 1

Best Players: Natasha Fazzalari, Milli Gentle, Tahnee Wright, Tylah Grummett, Kathleen Beer

Adelaide University

Goal Kickers: Sarah Tunstall 1

Best Players: Mirren MacLeod, Sarah Tunstall, Chelsea Manger, Jedda Dadds, Neve Robins

Pulteney 0.1-1

Pembroke OS 7.10-52

Pulteney

Goal Kickers: –

Best Players: Sophie Ridgway, Georja Osborne, Lara Kittel, Mackenzie Weaver, Alicia Werner

Pembroke OS

Goal Kickers: Alia Iannunzio 2, Indira Panelli 2, Ashlea Carter 1, Maggie Cole 1, Lucy Hammond 1

Best Players: Roszi Bentley, Ella Manning, Indira Panelli, Ashlea Carter, Ailis Nolan

WWW.SAFOOTBALLER.COM.AU

Find a Store Near You



Opening Hours

Fri & Sat:
11.00 am - 11.00 pm
Sun-Thu:
11.00 am - 10.00 pm

Healthy,
Creamy &
Guilt-Free!

twistndtop.com.au

Choose from over 65+ toppings
including fresh fruits
crunchy granola
indulgent syrups
and more!



08 8262 2676 | CONTACT@TWISTNDTOP.COM.AU



CARNIVAL RIDES OF SA

The most comprehensive
amusement hire company in Adelaide.



CHOOSE FROM A WIDE RANGE OF:

- ✓ Exciting Amusement Rides
- ✓ Games and Entertainment
- ✓ Food Equipment and more

Call us to find out how we can help you with
your event or entertain your guests.
Open Everyday 08:00am - 5:00pm

 **0408 817 628**

 **info@ridessa.com.au**

 **WWW.RIDESSA.COM.AU**



 **We supply and install Every where in South Australia**



PORT DISTRICT SCOTCH OC

PLAYED AT - LARGS RESERVE

QUARTER BY QUARTER SCORES

First Quarter	Port District 4.4 (28) v Scotch OC 0.0 (0) leading by 28 points
Second Quarter	Port District 6.7 (43) v Scotch OC 1.0 (6) leading by 37 points
Third Quarter	Port District 7.14 (56) v Scotch OC 1.0 (6) leading by 50 points
Fourth Quarter	Port District 8.14 (62) v Scotch OC 1.0 (6) leading by 56 points

Port District and Scotch OC faced off in a one-sided encounter where the home team dominated from start to finish.

In the first quarter, Port District came out firing, putting on a commanding display early. They kicked 4.4 (28) while keeping Scotch OC scoreless, setting the tone for the match with a 28-point lead at quarter time.

The second quarter saw Scotch OC finally get on the scoreboard with a solitary goal, but Port District continued to control the game, adding two more goals to take their tally to 6.7 (43). At halftime, the home side had stretched its lead to 37 points.

The third quarter brought more frustration for Scotch OC, as they remained on 1.0 (6) while Port District added several behinds and one major, extending their score to 7.14 (56). Despite some inaccuracy in front of the goal, Port District held a commanding 50-point lead heading into the final term.

In the last quarter, Port District eased off but still managed to add one more goal, finishing the match at 8.14 (62). Scotch OC were unable to mount any comeback and finished with 1.0 (6), making it a 56-point win for Port District.

It was a dominant performance from start to finish by Port District, who showcased their strength across all four quarters, both defensively and offensively.

BEST PLAYERS

The best players for Port District were Jasmine White, Jasmin Turner, Sinead Saunders, Sailor Cowen, and Alicia Gaffney. For Scotch OC, standout performers included Poppy Cartwright, Ella Pascoe, Ella Anderson, Annabel Kidman, and Mollie Willson.

GOAL SCORERS

Goal scorers for Port District were Jasmine White with five goals, along with Sailor Cowen, Sinead Saunders, and Brydie Van Dijk, who each kicked one. Scotch OC's sole goal came from Amy Kaesler.




Viral Bounty - Adelaide Startup

For Your Business

Crowdsourced

- Social Media Advertisement
- Promotional Video Creation

**Spread Brand
Awareness**

 Phone Number

0401 743 583

 Website

ViralBounty.App

**Social Media
Marketing**



MITCHAM WESTMINSTER OS

PLAYED AT - PRICE MEMORIAL OVAL

QUARTER BY QUARTER SCORES

First Quarter	Westminster OS 0.1 (1) v Mitcham 0.1 (1) scores level
Second Quarter	Westminster OS 0.6 (6) v Mitcham 0.2 (2) leading by 4 points
Third Quarter	Westminster OS 2.8 (20) v Mitcham 1.3 (9) leading by 11 points
Fourth Quarter	Westminster OS 2.9 (21) v Mitcham 1.4 (10) leading by 11 points

Mitcham and Westminster OS faced off in a low-scoring and tightly contested match, where both sides struggled to find fluency in attack throughout the day. The Hawks sit second on the ladder, and at home they were the favourites to win. However, the Dragons took it right up to the Hawks all game.

The first quarter was a slow and defensive affair, with both teams managing just a single behind each. The scores of 0.1 (1) each at quarter time set the tone for a scrappy contest.

In the second quarter, Westminster OS began to edge ahead. Despite neither side managing a goal, Westminster added five behinds to go into halftime with a 4-point lead, 0.6 (6) to Mitcham's 0.2 (2).

The third quarter finally saw a breakthrough in scoring, with Mitcham registering their first goal of the game. However, Westminster OS responded with two majors of their own and took control of the game, leading 2.8 (20) to 1.3 (9) at the final change.

In the last quarter, both defences continued to hold firm. Each side added just one more behind, and Westminster OS held on to secure a hard-fought 11-point win with a final score of 2.9 (21) to Mitcham's 1.4 (10). It was a gritty, hard-fought match where Westminster OS made the most of their opportunities, while Mitcham couldn't quite find the scoreboard pressure needed to turn the tide.

BEST PLAYERS

The best players for Mitcham were Laura Wilsdon, Keeley Fahey, Amy O'Leary, Dionisia Papageorgiou, and Gemma Monaghan. For Westminster OS, standout performers included Kendall Howell, Bailey Kramer, Samantha McKenzie, Caitlin Walter, and Sheridan Howell.

GOAL SCORERS

Goal scorers for Mitcham included Isabella Jawadi with one goal. Westminster OS's goals came from Jacinda Benbolt and Tashara Wilson, who scored one each.



**Made in
Australia for
Australian
conditions by
Australians**

Wesbeam is Australia's only home-grown manufacturer and supplier of LVL and LVL I-joists. We are the only LVL supplier that can trace the timber it uses which means that we're in control of the whole process.

The only Australian LVL and LVL I-Joist manufacturer. Engineered in Australia to be longer and stronger.



Learn more about
our homegrown LVL



Get your Wesbeam products today from Bunnings, K&B Timber, Timco Timber, Flinders, Bianco or any local timber hardware store!

DRIVING WITH CONFIDENCE

Servicing Adelaide's North,
Eastern and Western Suburbs,
Barossa Valley & Adelaide Plains



Licensing Program ✖

Auto Driving Lessons ✖

Flexible Lesson Times ✖

Experienced instructor ✖

BOOK NOW

0437 505 506

www.bossdrivingschool.net.au





FLINDERS PARK ADELAIDE UNIVERSITY

PLAYED AT - FLINDERS PARK OVAL

QUARTER BY QUARTER SCORES

- First Quarter** Flinders Park 1.2 (8) v Adelaide University 0.2 (2) leading by 6 points
Second Quarter Flinders Park 2.3 (15) v Adelaide University 0.2 (2) leading by 13 points
Third Quarter Flinders Park 4.7 (31) v Adelaide University 1.2 (8) leading by 23 points
Fourth Quarter Flinders Park 4.9 (33) v Adelaide University 1.3 (9) leading by 24 points

Flinders Park and Adelaide University went head-to-head in a defensive battle, with scoring at a premium throughout the match. Both sides were towards the foot of the table and the standard of the clash wasn't great. But the girls from both sides tried hard.

The first quarter saw Flinders Park get off to a steady start, booting 1.2 (8) while holding Adelaide University to just two behinds. At quarter time, Flinders Park led by 6 points in what looked like a grind of a game.

In the second quarter, Flinders Park continued to apply scoreboard pressure, adding another goal and behind to their tally. Meanwhile, Adelaide University was unable to trouble the scorers beyond their earlier two points, as Flinders Park took a 13-point lead into halftime with the scores at 2.3 (15) to 0.2 (2).

After the main break, Adelaide University finally found their first goal of the game, but Flinders Park responded strongly with two of their own. The third quarter saw Flinders Park push their lead out to 23 points, leading 4.7 (31) to 1.2 (8).

In the final quarter, both teams added just a couple of points each, as the game remained low-scoring and contested. Flinders Park ultimately ran out comfortable winners, 4.9 (33) to Adelaide University's 1.3 (9), claiming victory by 24 points. Flinders Park's consistency across each quarter and solid defensive pressure proved too much for Adelaide University, which struggled to find scoring opportunities all day.

BEST PLAYERS

The best players for Flinders Park were Natasha Fazzalari, Milli Gentle, Tahnee Wright, Tylah Grummett, and Kathleen Beer. For Adelaide University, standout performers included Mirren MacLeod, Sarah Tunstall, Chelsea Manger, Jedda Dadds, and Neve Robins.

GOAL SCORERS

Goal scorers for Flinders Park were Milli Gentle with two goals, along with Natasha Fazzalari and Tylah Grummett who each added one. Adelaide University's lone goal was kicked by Sarah Tunstall.



YOUR
TRADIE FINDER

TRADIES WANTED

Tap into our trusted network for a steady stream of business growth opportunities. Register your company for future work today!

Visit yourtradiefinder.com.au
or call Brenton 0452 485 943

LAUNCHING
2025





PULTENEY PEMBROKE OS

PLAYED AT - PARK 20

QUARTER BY QUARTER SCORES

First Quarter	Pembroke OS 2.4 (16) v Pulteney 0.0 (0) leading by 16 points
Second Quarter	Pembroke OS 3.4 (22) v Pulteney 0.0 (0) leading by 22 points
Third Quarter	Pembroke OS 5.7 (37) v Pulteney 0.0 (0) leading by 37 points
Fourth Quarter	Pembroke OS 7.10 (52) v Pulteney 0.1 (1) leading by 51 points

Pembroke OS and Pulteney faced off in a one-sided contest, with Pembroke asserting control from the opening bounce and maintaining dominance throughout the match. The Blues girls have had a tough season, but they keep turning up and trying each match.

In the first quarter, Pembroke OS came out strong, kicking 2.4 (16) while keeping Pulteney scoreless. Their early pressure around the ground and ability to convert gave them a 16-point lead at the first break.

The second quarter was a low-scoring one, but Pembroke OS still had the better of it, adding another goal to extend their lead to 22 points. Pulteney, meanwhile, continued to struggle to move the ball effectively and remained goalless heading into halftime.

After the main break, Pembroke OS increased the pressure once again, booting 2.3 in the third term to push the margin out to 37 points. Pulteney still couldn't register a major score, with their tally remaining at 0.0 (0) by three-quarter time.

In the final quarter, Pulteney managed to get on the scoreboard with a solitary behind, but it was Pembroke OS who closed out the match confidently, finishing 7.10 (52) to 0.1 (1). Their dominance across all four quarters saw them walk away with a comprehensive 51-point victory. Pembroke OS's defensive structure and ability to control possession were key factors, while Pulteney will look to regroup after a tough outing.

BEST PLAYERS

The best players for Pulteney were Sophie Ridgway, Georja Osborne, Lara Kittel, Mackenzie Weaver, and Alicia Werner. For Pembroke OS, standout performers included Roszi Bentley, Ella Manning, Indira Panelli, Ashlea Carter, and Ailis Nolan.

GOAL SCORERS

Pembroke OS's goal scorers were Alia Iannunzio and Indira Panelli with two goals each, along with Ashlea Carter, Maggie Cole, and Lucy Hammond who each contributed one. Pulteney did not register any goal scorers in this match.



acenights.com.au

Full-Service Casino Entertainment

Quote Today!

0402 964 477

*Your Vegas
experience without
the airfare!*

**BIRTHDAYS FUNDRAISING
BUCKS/HENS CORPORATE EVENTS**

Customer Service: 7070 1111

Ready to help you celebrate winners in 2025



ALPHA TROPHIES

SINCE 1985^{*} TROPHIES, AWARDS AND MEDALS

56 Prospect Road Prospect SA 5082

Ph: 7070 1111

Proudly Australian Owned & Operated

alphatrophies.com.au



SEE YOUR TEAM HYPNOTISED!

HILARIOUS COMEDY HYPNOSIS SHOWS FOR FOOTBALL CLUBS THIS SEASON

2025 FNC PACKAGE INCLUDES:

75 MINUTE SHOW

(FUN, ALL AGES & MIND BLOWING ENTERTAINMENT FOR THE ENTIRE COMMUNITY)

MARKETING BUNDLE

(POSTER DESIGN + FB EVENT BANNER + TICKET/FLYER DESIGN)

AV REQUIREMENTS

(MICROPHONE + STAGE SPEAKERS + CROWD SPEAKERS + MIXER)

ENQUIRE NOW TO SECURE YOUR DATE
0482 090 808



SCAN ME

ISAAC LOMMAN

HYPNOTIC



WWW.ISAACLOMMAN.COM



SMART FINANCE, SIMPLIFIED.

➔ RESIDENTIAL LENDING
➔ PERSONAL LENDING

➔ ASSET FINANCE
➔ COMMERCIAL LENDING



GROW FINANCIAL SOLUTIONS

Streamline Your Debt, Strengthen Your Finances.
growfinancialsolutions.com.au

**GET FINANCE, GIVE BACK!
WE DONATE TO YOUR CLUB
WITH EVERY LOAN SETTLED.**

REACH OUT TO PETA APPS TODAY



0468 455 685
peta.apps@growfinancialsolutions.com.au

Complete Plan Management Services



- Fast efficient payments
- Free mobile app
- We understand South Australian participants because we live here too!

YOUR CHOICE, YOUR CONTROL

Family owned
and operated
since 2017



Ph: 08 8185 0003

email: enquiries@completeplanmanagement.org





ADELAIDE BATHROOMS & RENOVATIONS SA

GIVE YOUR BATHROOM A FRESH NEW LOOK!

✓ Bathroom Renovations

✓ Fittings/ Tiles

✓ Design/ Planning

✓ Installation

From small updates to full-scale renovations, we handle it all!

Quality craftsmanship with attention to detail.

CONTACT US FOR A FREE QUOTE TODAY!

www.abarsa.com.au

(08) 8304 8901

admin@abarsa.com.au

19 Paula Ave, Windsor Gardens
Only 9km North East of the CBD

PROUDLY SERVING HOMEOWNERS ACROSS THE METROPOLITAN AREA AND ITS SURROUNDING SUBURBS.

DIVISION 4

PREMIERSHIP LADDER

	Team	P	PTS	%	W	L	D	BYE	FOR	AGST
1	Modbury	8	16	80.59	8	0	0	0	382	92
2	Loreto OS	8	9	55.52	4	3	1	0	241	193
3	Gepps Cross	8	8	58.16	4	4	0	0	292	210
4	Athelstone	8	8	52.98	4	4	0	0	231	205
5	Glenunga	8	8	38.25	4	4	0	0	189	305
6	Woodville South	8	7	42.32	3	4	1	0	124	169
7	Edwardstown	8	6	40.85	3	5	0	0	210	304
8	Salisbury	8	2	34.62	1	7	0	0	215	406

LEADING GOALKICKERS

	Player	Team	Games	Goals
1	Tiffany Henderson	Salisbury	8	11
2	Kia Bascomb	Glenunga	7	11
3	Natalie Lomman	Athelstone	6	11
4	Brooke Williams	Gepps Cross	8	10
5	Jaimee Banning	Modbury	8	8
6	Renae Becker	Modbury	8	8
7	Lily Noye	Modbury	7	8
8	Karii Doolan	Gepps Cross	6	8

NEXT ROUND OF MATCHES

SAT 21 JUN - A-GRADE MATCHES BEGIN AT 3:15 PM UNLESS OTHERWISE NOTIFIED

Loreto OS v Modbury	Campbelltown Memorial Oval
Gepps Cross v Athelstone	Duncan Fraser Reserve
Woodville South v Salisbury	Ledger Reserve
Edwardstown v Glenunga	04:45 PM, Edwardstown Oval

THE SOUTH AUSTRALIAN
FOOTBALLER

**SOUTH
AUSTRALIA'S
PREMIER
FOOTBALL
PUBLICATIONS**

**COVERING ALL
FOOTBALL ACROSS
SOUTH AUSTRALIA**

- AFL • SANFL
- AMATEURS
- WOMEN'S
- COUNTRY

THE SOUTH AUSTRALIAN
FOOTBALLER



FOLLOW US ON SOCIAL MEDIA

DIVISION 4

THE FINAL SCOREBOARD

Gepps Cross 7.11-53

Salisbury 5.1-31

Gepps Cross

Goal Kickers: Karii Doolan 2, Aimee Oxley 2, Kellie McLay 1, Emily Spoehr 1, Brooke Williams 1

Best Players: Emily Spoehr, Aimee Oxley, Karli Ferguson, Imani Anzuruni, Karii Doolan

Salisbury

Goal Kickers: Chelsea Hodge 2, Maka Geale 1, Tiffany Henderson 1, Jade Pryor 1

Best Players: Chelsea Hodge, Alana Evans, Maka Geale, Jade Pryor, Jade Joseph

Loreto OS 4.5-29

Woodville South 1.3-9

Loreto OS

Goal Kickers: Savannah Scaife 2, Amolika Bhatia 1, Annie Green 1

Best Players: Sarah Catterwell, Annie Green, Olivia Law, Lucy Franzon, Amolika Bhatia

Woodville South

Goal Kickers: Gabriella Ward 1

Best Players: Memphis Woolmington, Reni Schlink, Zoey-Elise Watson, Liana Paparella, Carmen Joubert

Athelstone 5.3-33

Edwardstown 2.5-17

Athelstone

Goal Kickers: Natalie Lomman 2, Nicole Hall 1, Vasilias Paschalidis 1, Private player 1

Best Players: Kristina Barone, Nicole Hall, Natalie Lomman, Mikayla Cammarere, Holly Nelson

Edwardstown

Goal Kickers: Jess Patching 2

Best Players: Tilly Patching, Jess Patching, Ashlee Fitzhardy, Isabella Fedele, Grace Sim

Glenunga 2.3-15

Modbury 2.10-22

Glenunga

Goal Kickers: Elisia Jones 1, Anna Matchett 1

Best Players: Lola Herrmann, Milly Prior, Emerson McClurg, Anna Matchett, Sophie Hart

Modbury

Goal Kickers: Jaimee Shaw 1, Gemma Sims-McLaren 1

Best Players: Danielle Menadue, Rhylee Tonkin, Tahlia Pointon, Ashlee Lemmer, Jaimee Shaw

WWW.SAFOOTBALLER.COM.AU

We've got what you need with great prices and good old fashioned service

Come to us for wheels and castors, plastic storage containers, food-grade plastic tubs, cleaning supplies, sack trucks & trolleys, ladders, and lots more!

View Our Range Online
admerch.com.au

Call Us 1300 237 467 **Email Us** enquiries@admerch.com.au



Come and visit our superstore showroom!
You can find us at 9 Grove Avenue, Marleston, SA 5033





Adelaide's Premier

CAR WASH

& Car Care Specialists

Services Offered:



**Eco-Friendly
Car Wash Solutions**



**Full-Service
Car Detailing**



**Paint
Protection**



BOOK NOW

WWW.ULTIMATEXPRESS.COM.AU

ADELAIDE CITY

**📍 121 West Terrace,
Adelaide**

☎ (08) 7006 2300

BRIGHTON

**📍 415 Brighton Rd,
Brighton**

☎ 0401 253 656

NORWOOD

**📍 Unit 2/114 Magill Rd,
Norwood**

☎ (08) 8362 5309



GEPPS CROSS SALISBURY

PLAYED AT - DUNCAN FRASER RESERVE

QUARTER BY QUARTER SCORES

- First Quarter** Gepps Cross 1.4 (10) v Salisbury 1.0 (6) leading by 4 points
Second Quarter Gepps Cross 2.8 (20) v Salisbury 1.0 (6) leading by 14 points
Third Quarter Gepps Cross 5.10 (40) v Salisbury 2.1 (13) leading by 27 points
Fourth Quarter Gepps Cross 7.11 (53) v Salisbury 5.1 (31) leading by 22 points

Gepps Cross and Salisbury faced off in a competitive clash that gradually shifted in favour of the home side as the game progressed. The Rams had control of the match all game, when you look at scoring opportunities. But they couldn't put the Magpies away until the final half.

The opening quarter saw both teams testing each other's structures early, with Gepps Cross managing to take a narrow lead. They kicked 1.4 (10) to Salisbury's 1.0 (6), taking a 4-point buffer into the first break. In the second quarter, Gepps Cross began to assert more control, dominating territory and piling on scoring shots. They added another goal and four behinds, while holding Salisbury scoreless for the term. At halftime, Gepps Cross led 2.8 (20) to 1.0 (6), extending the margin to 14 points.

The third quarter proved pivotal. Gepps Cross capitalised on their momentum and added three more goals, pushing their score to 5.10 (40). Salisbury did manage to respond with a goal and a behind, but Gepps Cross remained in control with a 27-point lead heading into the final term.

In the last quarter, Salisbury showed signs of life, kicking three straight goals to close the gap, but it wasn't enough. Gepps Cross managed to steady with two more goals of their own, finishing strong with a 22-point victory. The final score stood at Gepps Cross 7.11 (53) to Salisbury 5.1 (31). Gepps Cross's consistent pressure and scoreboard impact across the middle quarters proved to be the difference in what was a solid team performance.

BEST PLAYERS

The best players for Gepps Cross were Emily Spoehr, Aimee Oxley, Karli Ferguson, Imani Anzuruni, and Karii Doolan. For Salisbury, standout performers included Chelsea Hodge, Alana Evans, Maka Geale, Jade Pryor, and Jade Joseph.

GOAL SCORERS

Goal scorers for Gepps Cross were Karii Doolan and Aimee Oxley with two goals each, along with Kellie McLay, Emily Spoehr, and Brooke Williams, who each kicked one. Salisbury's goal scorers included Chelsea Hodge with two, and Maka Geale, Tiffany Henderson, and Jade Pryor with one apiece.



**Ready to help you celebrate
winners in 2025**



**ALPHA
TROPHIES**
SINCE 1985* TROPHIES, AWARDS AND MEDALS

56 Prospect Road Prospect SA 5082
Ph: 7070 1111

Proudly Australian Owned & Operated

alphatrophies.com.au





LORETO OS WOODVILLE SOUTH

PLAYED AT - CAMPBELLTOWN MEMORIAL OVAL

QUARTER BY QUARTER SCORES

First Quarter	Loreto OS 1.2 (8) v Woodville South 1.0 (6) leading by 2 points
Second Quarter	Loreto OS 3.4 (22) v Woodville South 1.1 (7) leading by 15 points
Third Quarter	Loreto OS 4.5 (29) v Woodville South 1.1 (7) leading by 22 points
Fourth Quarter	Loreto OS 4.5 (29) v Woodville South 1.3 (9) leading by 20 points

Loreto OS and Woodville South went head-to-head in a low-scoring but hard-fought contest, with Loreto OS controlling the match from early on and never relinquishing their lead. The Loreto girls are a good side and currently sit second on the ladder. The Cats by contrast are sixth, but can still make the finals with a more consistent back half of the season.

The opening quarter was tightly contested, with both sides applying plenty of pressure around the ball. Loreto OS managed to hit the scoreboard first, kicking 1.2 (8), while holding Woodville South to just 1.0 (6), taking a narrow 2-point lead into the first break. In the second quarter, Loreto OS began to build momentum. They added two goals and two behinds, while their defensive efforts kept Woodville South to only a single behind. At halftime, Loreto OS had stretched their lead to 15 points, with the scoreboard reading 3.4 (22) to 1.1 (7).

The third term saw more of the same, as Loreto OS remained in control of the contest. They added another goal to move to 4.5 (29), while Woodville South couldn't find an answer in attack and went scoreless for the quarter. Loreto OS entered the final break with a commanding 22-point lead.

In the last quarter, Woodville South showed some resistance, managing two behinds, but they were unable to mount a serious comeback. Neither team was able to kick a goal in the final term, and Loreto OS walked away with a comfortable win. The final score stood at Loreto OS 4.5 (29) to Woodville South 1.3 (9). It was a strong defensive showing from Loreto OS, who kept their opponents to just one goal across four quarters in a disciplined and composed performance.

BEST PLAYERS

The best players for Loreto OS were Sarah Catterwell, Annie Green, Olivia Law, Lucy Franzon, and Amolika Bhatia. For Woodville South, standout performers included Memphis Woolmington, Reni Schlink, Zoey-Elise Watson, Liana Paparella, and Carmen Joubert.

GOAL SCORERS

Goal scorers for Loreto OS were Savannah Scaife with two goals, and Amolika Bhatia and Annie Green with one each. Gabriella Ward was the sole goal scorer for Woodville South.



BOSS
Driving School

0437 505 506

www.bossdrivingschool.net.au

Servicing Adelaide's North, Eastern and Western Suburbs,
Barossa Valley & Adelaide Plains



TURKEY
FLAT
VINEYARDS
BAROSSA VALLEY

IS YOUR CLUB LOOKING FOR A FUNDRAISING OPPORTUNITY?



Turkey Flat Vineyards is situated in the Barossa Valley, we pride ourselves on crafting exceptional wines that embody the spirit and tradition of our historic vineyard, established in 1847. Whether you're seeking to enhance your club's events with our award-winning wines, looking to forge a partnership that aligns with our commitment to quality and community, or you just want to enjoy some wines yourself, Turkey Flat is here to meet your needs.

Contact Steve to discuss opportunities. email: info@turkeyflat.com.au
67 Bethany Road, Tanunda, Barossa Valley. call: 08 8563 2851
WWW.TURKEYFLAT.COM.AU





ATHELSTONE EDWARDSTOWN

PLAYED AT - MAX AMBER SPORTSFIELD

QUARTER BY QUARTER SCORES

First Quarter	Athelstone 1.2 (8) v Edwardstown 1.0 (6) leading by 2 points
Second Quarter	Athelstone 3.3 (21) v Edwardstown 1.2 (8) leading by 13 points
Third Quarter	Athelstone 5.3 (33) v Edwardstown 2.2 (14) leading by 19 points
Fourth Quarter	Athelstone 5.3 (33) v Edwardstown 2.5 (17) leading by 16 points

Athelstone and Edwardstown went head-to-head in a defensive battle that unfolded at Max Amber Sportsfield, with Athelstone controlling the game from early on and holding their lead throughout all four quarters. There was a bit riding on this game. The winner would end up in fourth position at the end of the round. The loser would be in seventh place. The Raggies are now primed to play the finals.

In the first quarter, both teams had a slow start as they settled into the match. Athelstone edged ahead by a narrow margin, kicking 1.2 (8) to Edwardstown's 1.0 (6), leading by just 2 points at quarter-time. The second quarter saw Athelstone begin to assert themselves more offensively. They kicked two more goals and held Edwardstown to just two behinds. At the main break, Athelstone had built a 13-point buffer, with the scoreboard reading 3.3 (21) to 1.2 (8).

Coming out after halftime, Athelstone continued their consistent performance, adding two goals to extend their lead. Edwardstown responded with a goal of their own, but it wasn't enough to close the gap significantly. By the end of the third term, Athelstone led 5.3 (33) to 2.2 (14), up by 19 points.

In the final quarter, both sides struggled to find major scoring opportunities. Edwardstown added three behinds, while Athelstone was held scoreless. Despite the late push, Edwardstown couldn't reel in the deficit, and Athelstone held on for a solid 16-point win. The final score stood at Athelstone 5.3 (33) to Edwardstown 2.5 (17). It was a gritty and composed showing from Athelstone, who managed the game well after halftime and relied on disciplined team defence to secure the victory.

BEST PLAYERS

The best players for Athelstone were Kristina Barone, Nicole Hall, Natalie Lomman, Mikayla Cammarere, and Holly Nelson. For Edwardstown, standout performers included Tilly Patching, Jess Patching, Ashlee Fitzhardy, Isabella Fedele, and Grace Sim.

GOAL SCORERS

Goal scorers for Athelstone were Natalie Lomman with two goals, along with Nicole Hall, Vasilia Paschalidis, and one unnamed player each contributing one. Edwardstown's goals came from Jess Patching, who kicked two.



ADELAIDE & REGIONAL SA

ELEVATE
SPORTS DEVELOPMENT

WWW.ELEVATESPORTSDEVELOPMENT.COM

- » Private Cricket Coaching
- » One on One Coaching
- » Group Academy Sessions
- » Club Visits & Workshops
- » Multi- Sport Entry Level programs & Volunteer Support
- » School Holiday Clinics
- » Focus Team Wear & Equipment

Plan for success:
Book your sports
club development
sessions and
workshops today.

Get in touch with Chris!

0488 168 596

CHRIS@ELEVATESPORTSDEVELOPMENT.COM



GLENUNGA MODBURY

PLAYED AT - WEBB OVAL

QUARTER BY QUARTER SCORES

First Quarter	Modbury 0.1 (1) v Glenunga 0.1 (1) leading by 0 points
Second Quarter	Modbury 1.4 (10) v Glenunga 1.2 (8) leading by 2 points
Third Quarter	Glenunga 2.3 (15) v Modbury 1.6 (12) leading by 3 points
Fourth Quarter	Modbury 2.10 (22) v Glenunga 2.3 (15) leading by 7 points

Glenunga and Modbury went head-to-head in a low-scoring, tightly contested match that played out at Webb Oval. Both teams showcased strong defensive pressure, making scoring opportunities hard to come by across all four quarters. The Hawks went into the game as the dominant side of the division, and they were expected to win convincingly over the Rams. But their kicking for goal was atrocious and only got over the line in the final term. Twelve scoring shots to five tells the story.

In the opening quarter, neither side could break away, with both Glenunga and Modbury managing just a single behind each. At the first break, the scores were level at 0.1 (1) apiece. The second quarter saw a slight shift in momentum as Modbury began to edge ahead. They added 1.3 for the term to take their total to 1.4 (10), while Glenunga registered their first goal of the match to trail narrowly at 1.2 (8) going into halftime.

Glenunga closed the gap early in the third quarter, adding another goal to momentarily take the lead. However, Modbury responded with two behinds, keeping the game within reach. Heading into the final break, Glenunga held a slim 3-point lead, 2.3 (15) to 1.6 (12).

In the final term, Modbury lifted their intensity and controlled the quarter. They added 1.4 to their tally while holding Glenunga scoreless, ultimately overturning the deficit to secure a 7-point win. The final score stood at Modbury 2.10 (22) defeating Glenunga 2.3 (15). It was a gritty and hard-fought contest, with Modbury's persistence and late-game execution proving decisive in the end.

BEST PLAYERS

The best players for Glenunga were Lola Herrmann, Milly Prior, Emerson McClurg, Anna Matchett, and Sophie Hart. Modbury's standout performers included Danielle Menadue, Rhylee Tonkin, Tahlia Pointon, Ashlee Lemmer, and Jaimee Shaw.

GOAL SCORERS

Goal scorers for Glenunga were Elisia Jones and Anna Matchett, who each contributed one goal. Modbury's goals came from Jaimee Shaw and Gemma Sims-McLaren, with one apiece.



EMETE PREMIUM VIEWING 4K ULTRA HD TVS

Stream, game and connect
with cinema-quality clarity

FULLY AUSTRALIAN-COMPLIANT

- ✓ ELEGANT DESIGNS
- ✓ RELIABLE TECH
- ✓ HONEST PRICING
- ✓ FREE WALL MOUNTS
- ✓ 2-YEAR WARRANTIES
- ✓ TOP-NOTCH SUPPORT

CONTACT US

Phone Number
1300 585 853
Email
info@emete.tv

Website
www.emete.tv
FAST DELIVERY



TerraMedia



DIGITAL MARKETING

TAKING CARE OF YOUR DIGITAL PROCESSES

so you don't have to!

DIGITAL TRANSFORMATION

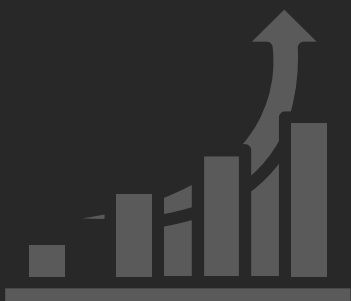
INTEGRATING AUTOMATION SOLUTIONS

STREAMLINING WORKFLOWS

TALK TO US

1800 706 109 | 0434 611 228

info@terramedia.com.au





JOIN THE WINE CLUB

The best Hey Diddle drops delivered direct to door all year long.
Pick your preference and we'll handle the rest.

3, 6 & 12 month delivery options available.
Exclusive members only events and discounts.



heydiddle.com.au | follow us on Insta & FB @heydiddlewines

DIVISION 5

PREMIERSHIP LADDER

	Team	P	PTS	%	W	L	D	BYE	FOR	AGST
1	Salisbury North	8	14	82.70	7	1	0	0	574	120
2	Kilburn	8	14	73.66	7	1	0	0	512	183
3	St Peters OCW	8	10	75.71	5	3	0	0	452	145
4	Marion	8	10	67.70	5	3	0	0	369	176
5	Houghton Districts	8	8	56.42	4	4	0	0	303	234
6	North Haven	8	4	35.34	2	5	0	0	217	397
7	OSB Lonsdale	8	2	6.82	1	7	0	0	45	614
8	Adelaide University	8	2	6.24	1	6	0	0	43	646

LEADING GOALKICKERS

	Player	Team	Games	Goals
1	Madeline-Rose Agius	Kilburn	8	33
2	Rebekah Wanganeen	Salisbury North	7	28
3	Chloe Datson	Salisbury North	7	18
4	Isabelle Dawson	Marion	7	17
5	Casey Barnes	Salisbury North	8	10
6	Layla Bankes	Marion	8	10
7	Keylah Walker	St Peters OCW	8	9
8	Charlotte Travers	St Peters OCW	7	9

NEXT ROUND OF MATCHES

SAT 21 JUN - A-GRADE MATCHES BEGIN AT 3:15 PM UNLESS OTHERWISE NOTIFIED

Adelaide University v North Haven	01:30 PM, Park 12
Salisbury North v Kilburn	Salisbury North Oval
St Peters OCW v Marion	St Peters College
Houghton Districts v OSB Lonsdale	04:45 PM, Houghton Memorial Oval

THE SOUTH AUSTRALIAN
FOOTBALLER

**SOUTH AUSTRALIA'S
PREMIER FOOTBALL
PUBLICATIONS**

**ADVERTISING
SUPER SPECIAL
ADVERTISE FOR
ONLY**

**\$6 PER WEEK
IN OUR MAGAZINES**

**PHONE LUKE ON
0404 846 412 AND
MENTION 'SAF SPECIAL'**

THE SOUTH AUSTRALIAN
FOOTBALLER



FOLLOW US ON SOCIAL MEDIA

DIVISION 5

THE FINAL SCOREBOARD

OSB Lonsdale 0.6-6
Adelaide University 3.6-24

OSB Lonsdale

Goal Kickers: –

Best Players: Jordan Ross, Summer Shilling, Sienna Richardson, Bianca Payne, Renee O'Brien

Adelaide University

Goal Kickers: Batool Amsdr 1, Stella Newman 1, Katie White 1

Best Players: Katie White, Tilly Wilson, Annaliese Watts, Isabel Manson, Edwina Page

Kilburn 14.12-96
North Haven 0.4-4

Kilburn

Goal Kickers: Madeline-Rose Agius 7, Kiara Agius 1, Taylah Botten 1, Brooke Faulds 1, Talana Knaggs 1, Jacinda Roy 1, Crystal Sumner 1, Kirra Wielechowski 1

Best Players: Taylah Botten, Brooke Faulds, Ashleigh Thomas, Talana Knaggs, Madeline-Rose Agius

North Haven

Goal Kickers: –

Best Players: Petria Vasiljevic, Meegan Mullin, Sonelia Kylee Goldsmith, Kiara Purdie, Teena Leicester

St Peters OCW 1.3-9
Salisbury North 5.9-39

St Peters OCW

Goal Kickers: Millie Gosse 1

Best Players: Keylah Walker, Caitlin Muir, Lilly Maerschel, Charlotte Travers, Millie Gosse

Salisbury North

Goal Kickers: Chloe Datson 2, Jerrain Calyun 1, Sienna Ta 1, Rebekah Wanganeen 1

Best Players: Katelyn Webster, Jaimee Mataira, Chloe Datson, Brianna Arnold, Janikah Newchurch

Marion 1.8-14
Houghton Districts 0.1-1

Marion

Goal Kickers: Isabelle Dawson 1

Best Players: Courtney Kluge, Jessica Axford, Darcie Coad, Tessa Wesson, Charli Warland

Houghton Districts

Goal Kickers: –

Best Players: Sharnea Armstrong, Hayley Henderson, Mackenzie Pascoe, Tayah Hall, Amber Davey

WWW.SAFOOTBALLER.COM.AU

Want to become a Personal Trainer?



Check Out Fitness Education Online

Courses are 100% online and self paced.



Scan me!

or visit feoacademy.com.au/sa

STREAMLINE YOUR MERCHANDISE ONLINE



- YOUR ONLINE MERCH
STORE SET UP AT NO COST



- NO MINIMUM ORDERS

- EASY TO USE ONLINE
STORE AVAILABLE 24/7



- IN HOUSE DEDICATED
ONLINE TEAM

- NO HOLDING STOCK

- MADE LOCALLY TO
AVOID DELAYS



- WE HANDLE PRODUCTION,
SHIPPING & INVENTORY

YOUR CLUB ONLINE STORE AWAITS!



GET IN TOUCH TODAY

1300 123 609

support@scaess.com.au

sportscentre.com.au



OSB LONSDALE ADELAIDE UNIVERSITY

PLAYED AT - LONSDALE OVAL

QUARTER BY QUARTER SCORES

- First Quarter** Adelaide University 1.2 (8) v OSB Lonsdale 0.1 (1) leading by 7 points
Second Quarter Adelaide University 1.3 (9) v OSB Lonsdale 0.3 (3) leading by 6 points
Third Quarter Adelaide University 2.6 (18) v OSB Lonsdale 0.3 (3) leading by 15 points
Fourth Quarter Adelaide University 3.6 (24) v OSB Lonsdale 0.6 (6) leading by 18 points

OSB Lonsdale and Adelaide University went head-to-head in a low-scoring contest at Morphett Vale, where defence dominated for much of the match. While OSB Lonsdale fought hard, it was Adelaide University that maintained control across all four quarters to secure the win. These two sides have struggled all season. With both teams anchored to the bottom of the ladder. So it was a good opportunity for one of the teams to have a confidence-boosting win.

In the opening term, Adelaide University edged ahead with the only goal of the quarter, taking a 7-point lead into the first break with the scores at 1.2 (8) to OSB Lonsdale's 0.1 (1). The second quarter was a scrappy affair with both sides struggling to convert their chances. Adelaide University added just one behind, but still managed to increase their lead slightly as OSB Lonsdale kicked two more behinds. At halftime, Adelaide University led 1.3 (9) to 0.3 (3).

The third quarter saw the visitors begin to pull away, with Adelaide University adding another goal and three behinds to their tally. OSB Lonsdale, on the other hand, couldn't register a major score, leaving the margin at 15 points at the final change, 2.6 (18) to 0.3 (3).

In the final term, OSB Lonsdale finally found some scoring rhythm, adding three behinds to finish on 0.6 (6), but Adelaide University sealed the result with one more goal. The final score was Adelaide University 3.6 (24) to OSB Lonsdale 0.6 (6), capping off a strong defensive performance. Despite the low scoring, Adelaide University's consistency and pressure across the ground proved to be the difference in the end.

BEST PLAYERS

The best players for OSB Lonsdale were Jordan Ross, Summer Shilling, Sienna Richardson, Bianca Payne, and Renee O'Brien. Adelaide University's top performers included Katie White, Tilly Wilson, Annaliese Watts, Isabel Manson, and Edwina Page.

GOAL SCORERS

While OSB Lonsdale did not register any goal scorers, Adelaide University saw goals from Batool Amsdr, Stella Newman, and Katie White, with one goal each.



The Sideline Wrap

For all the games she never missed
wrap her in warmth this Mother's Day
Handmade on the Fleurieu from vintage woollen yarns

\$149
Order Today

www.fleurieumade.com/products/the-sideline-wrap

FLEURIEU
MADE



KILBURN NORTH HAVEN

PLAYED AT - BLAIR ATHOL RESERVE

QUARTER BY QUARTER SCORES

First Quarter	Kilburn 6.2 (38) v North Haven 0.1 (1) leading by 37 points
Second Quarter	Kilburn 8.5 (53) v North Haven 0.1 (1) leading by 52 points
Third Quarter	Kilburn 11.9 (75) v North Haven 0.2 (2) leading by 73 points
Fourth Quarter	Kilburn 14.12 (96) v North Haven 0.4 (4) leading by 92 points

Kilburn and North Haven faced off in a one-sided contest at Blair Athol Reserve, where Kilburn dominated from the opening bounce and never looked back. The Chics are second on the ladder and looking certain to play finals, while the Magpies are struggling and need to get a move on if they want to play in September.

In the first quarter, Kilburn exploded out of the blocks, piling on six goals and two behinds to take a commanding 37-point lead. North Haven, on the other hand, managed only a single behind, with the scoreboard reading Kilburn 6.2 (38) to North Haven 0.1 (1).

The second quarter saw Kilburn maintain their momentum, adding another two goals and three behinds while keeping North Haven completely scoreless for the term. By halftime, the margin had ballooned to 52 points, with Kilburn leading 8.5 (53) to 0.1 (1).

After a disrupted third quarter (with no official score registered for North Haven), Kilburn pushed further ahead, adding three more goals and four behinds. North Haven still couldn't find any scoring rhythm, and the score stood at 11.9 (75) to 0.1 (1) at the final change.

In the last quarter, North Haven finally managed to score their first goal of the match, finishing with 0.4 (4), but Kilburn sealed a dominant win by adding another three goals and three behinds. The final score read Kilburn 14.12 (96) to North Haven 0.4 (4). It was a clinical performance from Kilburn, who controlled every aspect of the game and ran out 92-point winners in a strong display of four-quarter football.

BEST PLAYERS

The best players for Kilburn were Taylah Botten, Brooke Faulds, Ashleigh Thomas, Talana Knaggs, and Madeline-Rose Agius. For North Haven, standout performances came from Petria Vasiljevic, Meegan Mullin, Sonelia Kylee Goldsmith, Kiara Purdie, and Teena Leicester.

GOAL SCORERS

Kilburn's goal scorers included Madeline-Rose Agius with an impressive seven goals, along with Kiara Agius, Taylah Botten, Brooke Faulds, Talana Knaggs, Jacinda Roy, Crystal Sumner, and Kirra Wielechowski, who each contributed one goal. North Haven did not register any goal scorers.





JESSUP'S

MOW & MORE

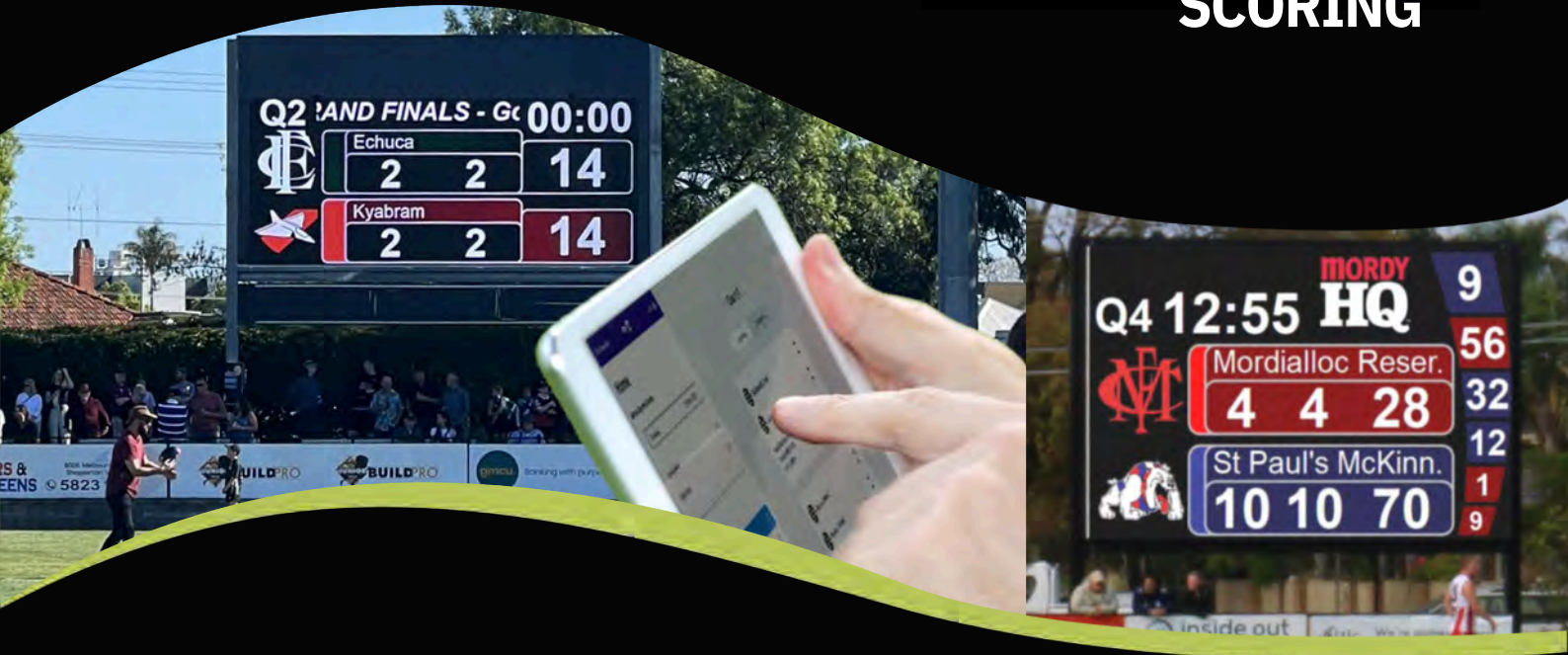
LAWN MOWING - EDGES - BLOWING - HEDGE TRIMMING
PRUNING - TREE TRIMMING - YARD CLEAN UPS - WEED SPRAYING
HIGH PRESSURE WASHING - VARIOUS HANDYMAN WORK

CALL BRODIE - 0484 259 783

JESSUPSMOWMORE@GMAIL.COM

solid

SCORING



- **Thinking of a new scoreboard for your Club?**
- Would you love to lift the appearance & functionality of your existing scoreboard?
- How about simplifying game-day and linking your scoreboard to **PlayHQ**?
- Do you need professional Game-Day scoreboard support for your volunteers?

If so, click **YES** for more detail

...we do cricket too!

www.solid.com.au



ST PETERS OCW SALISBURY NORTH

PLAYED AT - ST PETERS COLLEGE

QUARTER BY QUARTER SCORES

- First Quarter** Salisbury North 1.2 (8) v St Peters OCW 1.1 (7) leading by 1 point
Second Quarter Salisbury North 4.2 (26) v St Peters OCW 1.3 (9) leading by 17 points
Third Quarter Salisbury North 5.5 (35) v St Peters OCW 1.3 (9) leading by 26 points
Fourth Quarter Salisbury North 5.9 (39) v St Peters OCW 1.3 (9) leading by 30 points

St Peter's OCW and Salisbury North faced off in a low-scoring but competitive match, with the action taking place at Caterer Oval. The Hawks girls sit on top of the ladder while St Peter's sit third. Before the match, everyone wondered if the new kids on the block could take it up to their more experienced opponents. But but struggled like all teams before them in 2025.

The opening quarter was tightly contested, with both teams struggling to generate early momentum. Salisbury North edged ahead by a single point, scoring 1.2 (8) to St Peters OCW's 1.1 (7). In the second quarter, Salisbury North began to break away. They added three goals straight to take control of the game, while St Peters OCW could only manage two behinds. At halftime, Salisbury North held a 17-point lead, with the scoreboard reading 4.2 (26) to 1.3 (9).

The third quarter saw the game slow down considerably, with scoring opportunities limited on both sides. Salisbury North added a goal and three behinds to extend their lead slightly, while St Peters OCW were held scoreless for the quarter. Heading into the final term, Salisbury North led 5.5 (35) to 1.3 (9).

In the last quarter, Salisbury North again added four behinds while continuing to apply pressure across the ground. St Peters OCW, despite a strong defensive effort, couldn't add to their tally, finishing the game with the same score they had at quarter time. The match concluded with Salisbury North securing a 30-point win, 5.9 (39) to 1.3 (9). It was a strong defensive showing from Salisbury North, who restricted St Peters OCW to just one goal for the entire game.

BEST PLAYERS

The best players for St Peters OCW were Keylah Walker, Caitlin Muir, Lilly Maerschel, Charlotte Travers, and Millie Gosse. For Salisbury North, standout performances came from Katelyn Webster, Jaimee Mataira, Chloe Datson, Brianna Arnold, and Janikah Newchurch.

GOAL SCORERS

St Peters OCW's sole goal was scored by Millie Gosse. For Salisbury North, Chloe Datson led the way with two goals, while Jerrain Calyun, Sienna Ta, and Rebekah Wanganeen each contributed one goal.



KANOON

WE GRILL, YOU CHILL.

HUNGRY?!

WELCOME TO OUR MIDDLE EASTERN GRILL RESTAURANT, OFFERING AUTHENTIC DISHES AND TAKEAWAY OPTIONS. ENJOY FLAVORFUL GRILLS AND KNAFE, MADE WITH FRESH INGREDIENTS AND TRADITIONAL SPICES. EXPERIENCE THE TRUE ESSENCE OF MIDDLE EASTERN CUISINE WITH US!

159 Henley Beach Rd, Mile End 5031

0422247990

kanoon.grill

kanoongrillsa

kanoongrills@gmail.com

Kanoon Grills SA



AVAILABLE ON:

Uber Eats
MenuLog
Doordash





MARION HOUGHTON DISTRICTS

PLAYED AT - MARION SPORTS CLUB

QUARTER BY QUARTER SCORES

First Quarter	Marion 0.7 (7) v Houghton Districts 0.0 (0) leading by 7 points
Second Quarter	Marion 0.7 (7) v Houghton Districts 0.0 (0) leading by 7 points
Third Quarter	Marion 1.8 (14) v Houghton Districts 0.0 (0) leading by 14 points
Fourth Quarter	Marion 1.8 (14) v Houghton Districts 0.1 (1) leading by 13 points

Marion and Houghton Districts went head-to-head in a low-scoring defensive grind at Sturt Oval, where accurate goal-kicking was hard to come by and both teams struggled to convert opportunities. A bit was riding on the game. The winner would be in fourth position, and the loser would drop to fifth. So both teams were desperate for the win.

In the first quarter, Marion had the better of the play but were unable to make it count on the scoreboard. Despite creating multiple chances, they registered seven behinds without a goal, finishing the term 0.7 (7) to Houghton Districts' 0.0 (0), taking a 7-point lead.

The second quarter mirrored the first, with both sides locked in a scrappy battle across the midfield. Neither team managed a major, and Marion went into halftime still on 0.7 (7), while Houghton Districts remained scoreless at 0.0 (0).

After the main break, Marion finally broke through for their first and only goal of the game, adding 1.1 to take their total to 1.8 (14). Houghton Districts continued to struggle with forward movement and were unable to register a score in the third term, trailing by 14 points at three-quarter time.

In the final quarter, Houghton Districts managed to avoid a goalless finish with a single behind, but it was too little, too late. Marion held firm to secure a hard-fought 13-point win, 1.8 (14) to 0.1 (1), in a match defined by missed chances and strong defensive pressure.

BEST PLAYERS

The best players for Marion were Courtney Kluge, Jessica Axford, Darcie Coad, Tessa Wesson, and Charli Warland. Houghton Districts were well represented by strong performances from Sharnea Armstrong, Hayley Henderson, Mackenzie Pascoe, Tayah Hall, and Amber Davey.

GOAL SCORERS

Marion's only goal was scored by Isabelle Dawson, while Houghton Districts did not register any goal scorers.



KITCHEN SCENE

free in-home consultation

0428 000 990

kitchenscene.com.au



SOUTH AUSTRALIA'S MOST CUSTOMISED BEER!



CLEAN SWEEP GOLD, SILVER, BRONZE



**contact us to
find out more**



Print Wrap Pack
89 South Road
Hindmarsh SA 5007
printwrappack.com

**89
STH**
BREWING

**P-W-P
PRINT
WRAP
PACK**

call us on **08 7078 6186** or email your enquiry to sales@printwrappack.com



SA Family-owned business operating for 20 years now. We cater to the services below, where we tailor your needs to suit your requirements and budget. Call us today to discuss how we can help you, for your home or business

- Network cabling and certification on all data products
- Optical fibre cabling systems
- Security & Access control
- CCTV systems – for the home and business
- MATV systems – for the home and business
- Nurse call systems



0428818592



www.mrcomms.com.au



sales@mrcomms.com.au

DIVISION 6

PREMIERSHIP LADDER

	Team	P	PTS	%	W	L	D	BYE	FOR	AGST
1	Seaton Ramblers	8	14	91.52	7	1	0	0	799	74
2	Tea Tree Gully	8	14	81.15	7	1	0	0	590	137
3	Ingle Farm	8	10	53.47	5	3	0	0	292	254
4	Hope Valley	8	5	37.60	2	5	1	0	232	385
5	West Croydon	8	3	39.36	1	6	1	0	246	379
6	Smithfield	8	2	4.50	1	7	0	0	46	976

LEADING GOALKICKERS

	Player	Team	Games	Goals
1	Grace Grierson	Seaton Ramblers	6	33
2	Jamie Rapana-Burnett	Seaton Ramblers	7	22
3	Lani Collins	Ingle Farm	8	20
4	Markita Bond	Tea Tree Gully	8	19
5	Belinda Payne	Tea Tree Gully	7	18
6	Alexis Nieass	Tea Tree Gully	6	15
7	Susan Mountstephen	West Croydon	5	14
8	Chloe Forby	Seaton Ramblers	4	14

NEXT ROUND OF MATCHES

FRI 20 JUN

Hope Valley v Hope Valley
07:00 PM, Pedlar Reserve

SAT 21 JUN

West Croydon v Tea Tree Gully
10:30 AM, Fawk Reserve

Ingle Farm v Smithfield
04:45 PM, Rowe Park

THE SOUTH AUSTRALIAN
FOOTBALLER

**SOUTH
AUSTRALIA'S
PREMIER
FOOTBALL
PUBLICATIONS**

**COVERING ALL
FOOTBALL ACROSS
SOUTH AUSTRALIA**

- AFL • SANFL
- AMATEURS
- WOMEN'S
- COUNTRY

THE SOUTH AUSTRALIAN
FOOTBALLER



FOLLOW US ON SOCIAL MEDIA

DIVISION 6

THE FINAL SCOREBOARD

West Croydon 0.6-6

Ingle Farm 7.2-44

West Croydon

Goal Kickers: –

Best Players: Natalie Watkins, Anna Higgs, Ashlee Radley, Nicky Sampson, Brooke Grose

Ingle Farm

Goal Kickers: Lani Collins 3, Makayla Trener 2, Amariah Lynch 1, Vicki Smart 1

Best Players: Teremoana Aguilar, Shai Mount, Jemma Slaap, Lani Collins, Vicki Smart

Hope Valley 3.1-19

Tea Tree Gully 7.7-49

Hope Valley

Goal Kickers: Chloe Rinna 2, Alanna Wittmann 1

Best Players: Chloe Rinna, Amy Bull, Skye Grant-Allan, Aliyah Pix, Gabriella Letief

Tea Tree Gully

Goal Kickers: Markita Bond 3, Belinda Payne 2, Lara Nemeth 1, Alexis Nieass 1

Best Players: Tiarna Anderson, Alyssa Heffernan, Bianca Moise, Markita Bond, Belinda Payne

Smithfield 0.0-0

Seaton Ramblers 21.16-142

Smithfield

Goal Kickers: –

Best Players: Tameka Joseph, Selina Sebhatu, Marilynrose Jenner, Susan Hart, Melissa Gauci

Seaton Ramblers

Goal Kickers: Grace Grierson 7, Jamie Rapana-Burnett 5, Lucy Ellingsen 2, Makayla Collins 1, Tina Dichiera 1,

Alysha Fitzgerald 1, Indiana Harrison 1, Rhiannan Murphy 1, Phoebe Roberts 1, Kate Walsh 1

Best Players: Rhiannan Murphy, Jamie Rapana-Burnett, Kate Walsh, Lucy Ellingsen, Indiana Harrison

SOUTH AUSTRALIA'S PREMIER FOOTBALL PUBLICATIONS
ADVERTISING SUPER SPECIAL ADVERTISE FOR
ONLY \$6 PER WEEK

THE SOUTH AUSTRALIAN
 **FOOTBALLER**

PHONE LUKE ON 0404 846 412 AND MENTION 'SAF SPECIAL'



LFG PROPERTY
DEVELOPMENT

WHY CHOOSE LFG?

No marketing fees
No agent commissions
No open inspections
Discreet off-market sale
No spending money on your property
Easy, stress-free process
Flexible settlement terms
(minimum land size 600m2)

GET IN TOUCH

MARC MARESCA
0407 979 491
marc@lfgpd.com.au



GENUINE ACCESS. REAL COMFORT. PERSONALISED SERVICE.



WE OFFER:

- ☒ Domestic Flights
- ☒ Accommodation
- ☒ Event Tickets

Morey's Sports & Music Tours understand your passion for live sport and music.
Book now and let us assist with your travel requirements!

CONTACT US



WEST CROYDON INGLE FARM

PLAYED AT - FAWK RESERVE

QUARTER BY QUARTER SCORES

First Quarter	Ingle Farm 1.0 (6) v West Croydon 0.2 (2) leading by 4 points
Second Quarter	Ingle Farm 2.0 (12) v West Croydon 0.3 (3) leading by 9 points
Third Quarter	Ingle Farm 4.2 (26) v West Croydon 0.5 (5) leading by 21 points
Fourth Quarter	Ingle Farm 7.2 (44) v West Croydon 0.6 (6) leading by 38 points

West Croydon and Ingle Farm faced off in a tough, low-scoring encounter where defensive pressure was high and goals were hard to come by, at least for one side. A win here for the Farmers would make it nearly certain for them to play the finals. They're now 3 games and percentage clear in the third spot.

In the opening quarter, both teams struggled to find their rhythm, but Ingle Farm managed the only goal of the term to take an early 4-point lead, 1.0 (6) to West Croydon's 0.2 (2).

The second quarter saw Ingle Farm add another goal without conceding one, extending their advantage to 9 points at halftime with the scoreboard reading 2.0 (12) to 0.3 (3). West Croydon remained goalless despite several chances.

After the main break, Ingle Farm began to pull away, booting two more goals while West Croydon managed just two behinds. At three-quarter time, Ingle Farm held a commanding 21-point lead, 4.2 (26) to 0.5 (5).

In the final quarter, Ingle Farm sealed the result with a strong finish, piling on three goals to none. West Croydon managed only one additional behind, ending the match goalless. The final scores stood at Ingle Farm 7.2 (44) to West Croydon 0.6 (6), capping off a dominant 38-point victory.

BEST PLAYERS

The best players for West Croydon were Natalie Watkins, Anna Higgs, Ashlee Radley, Nicky Sampson, and Brooke Grose. For Ingle Farm, standout performances came from Teremoana Aguilar, Shai Mount, Jemma Slaap, Lani Collins, and Vicki Smart.

GOAL SCORERS

Ingle Farm's goal scorers were Lani Collins with three, Makayla Trenerry with two, and one each to Amariah Lynch and Vicki Smart. West Croydon did not register any goal scorers.



HEADLIGHT RESTORATION
RIMSKIN RIM PROTECTORS
BRAKE CALIPER PAINTING

Call Brenton on
0418 800 168

Mag
Wheel Repairs
ADELAIDE

www.magwheelrepairs.com.au

WE REPAIR SCRATCHED AND KERB RASHED MAG WHEELS



HOPE VALLEY TEA TREE GULLY

PLAYED AT - HOPE VALLEY SPORTING CLUB

QUARTER BY QUARTER SCORES

First Quarter	Tea Tree Gully 2.2 (14) v Hope Valley 1.1 (7) leading by 7 points
Second Quarter	Tea Tree Gully 6.3 (39) v Hope Valley 1.1 (7) leading by 32 points
Third Quarter	Tea Tree Gully 6.5 (41) v Hope Valley 3.1 (19) leading by 22 points
Fourth Quarter	Tea Tree Gully 7.7 (49) v Hope Valley 3.1 (19) leading by 30 points

Hope Valley and Tea Tree Gully went head-to-head in a competitive clash that saw Tea Tree Gully take control early and never let go. Gullies, along with Seaton Ramblers, have been the teams to beat all season, and the Demon girls were always going to struggle against quality opposition.

In the first quarter, both teams looked to settle into the contest, but it was Tea Tree Gully who found the early advantage, kicking 2.2 (14) to Hope Valley's 1.1 (7), taking a 7-point lead into the first break. The second quarter saw Tea Tree Gully take full control of the match. Their attacking pressure resulted in four unanswered goals, while Hope Valley failed to add to their score. By halftime, Tea Tree Gully had built a strong 32-point lead, with the scoreboard reading 6.3 (39) to 1.1 (7).

Hope Valley showed some fight in the third term, adding two goals to bring some life back into their game. However, Tea Tree Gully remained composed, adding two more behinds to maintain their advantage. Heading into the final quarter, the margin stood at 22 points, with Tea Tree Gully leading 6.5 (41) to 3.1 (19).

In the last quarter, Tea Tree Gully closed out the match professionally. They added one more goal and two behinds, while holding Hope Valley scoreless for the term. The final scores were Tea Tree Gully 7.7 (49) defeating Hope Valley 3.1 (19), claiming a convincing 30-point victory.

BEST PLAYERS

The best players for Hope Valley were Chloe Rinna, Amy Bull, Skye Grant-Allan, Aliyah Pix, and Gabriella Letief. For Tea Tree Gully, standout performances came from Tiarna Anderson, Alyssa Heffernan, Bianca Moise, Markita Bond, and Belinda Payne.

GOAL SCORERS

Goal scorers for Hope Valley were Chloe Rinna with two and Alanna Wittmann with one. Tea Tree Gully's goal scorers included Markita Bond with three, Belinda Payne with two, and one each from Lara Nemeth and Alexis Nieass.




THE NAIL SHOP

Professional Affordable Nail Products

www.thenailshop.com.au

08 8263 3636 or 0416 157 087

Click & Collect in Holden Hill

Nail supplies for hobbyists and professionals





SMITHFIELD SEATON RAMBLERS

PLAYED AT - SMITHFIELD OVAL

QUARTER BY QUARTER SCORES

First Quarter	Seaton Ramblers 6.6 (42) v Smithfield 0.0 (0) leading by 42 points
Second Quarter	Seaton Ramblers 11.10 (76) v Smithfield 0.0 (0) leading by 76 points
Third Quarter	Seaton Ramblers 15.12 (102) v Smithfield 0.0 (0) leading by 102 points
Fourth Quarter	Seaton Ramblers 21.16 (142) v Smithfield 0.0 (0) leading by 142 points

It was a one-sided affair at Smithfield Oval as the Seaton Ramblers dominated from the first bounce to claim a massive win over Smithfield. The Rams entered the game in first place, while the Panthers were at the bottom of the table. There was never any doubt about the outcome. The only issue was the margin of the win.

In the opening quarter, Seaton Ramblers came out firing, putting on a six-goal blitz while keeping Smithfield scoreless. By quarter-time, the scoreboard read 6.6 (42) to 0.0 (0), with Seaton already in complete control.

The second quarter followed a similar pattern, with Seaton continuing to pile on the goals. Their forward line remained relentless, adding another five goals and four behinds. Smithfield was unable to register a score by halftime, and Seaton went into the main break with a commanding 76-point lead: 11.10 (76) to 0.0 (0).

After halftime, the Ramblers showed no signs of slowing down. They added another four goals and two behinds in the third term, taking their tally to 15.12 (102), while Smithfield still couldn't find a way onto the scoreboard.

In the final quarter, Seaton finished in dominant fashion, adding six more goals and four behinds. Despite Smithfield's efforts, they were held scoreless for the entire match. The final score was a comprehensive 21.16 (142) to 0.0 (0) victory for the Seaton Ramblers, highlighting their attacking strength and defensive pressure throughout the game.

BEST PLAYERS

The best players for Smithfield were Tameka Joseph, Selina Sebhatu, Marilynrose Jenner, Susan Hart, and Melissa Gauci. For Seaton Ramblers, standout performers included Rhiannan Murphy, Jamie Rapana-Burnett, Kate Walsh, Lucy Ellingsen, and Indiana Harrison.

GOAL SCORERS

While Smithfield had no goal scorers listed, Seaton Ramblers delivered a dominant offensive display with Grace Grierson scoring seven goals, Jamie Rapana-Burnett adding five, Lucy Ellingsen contributing two, and single goals from Makayla Collins, Tina Dichiera, Alysha Fitzgerald, Indiana Harrison, Rhiannan Murphy, Phoebe Roberts, and Kate Walsh.



Frankly You

TO BE PERFECTLY FRANK • TO BE PERFECTLY FRANK • TO BE PERFECTLY FRANK

Scan me

Nutrition Built For Athletes

Feel Your Best, Every Single Day.

- ✓ Performance and Match Day Nutrition
- ✓ Injury and Rehab Nutrition

Body Composition Changes

Gut Health and Training

Supplement Recommendations

Monthly Education

**Individual & Team
Sport Services**

alexlamondnutrition.com

Trusted by Olympians, National Champions,
and Professional Athletes across many sports.

Book a Discovery Call



Alex Lamond
Sports Dietitian

Or send me an email:
info@alexlamondnutrition.com





HF HOME AND POOL IN ADELAIDE

BUILD YOUR ULTIMATE DREAM HOME & POOL

- Licensed and Insured • Reliable Services •
- Flexible Hours • Free Quotes •
- Quality Workmanship •
- Use of Qualitative Materials •
- Twenty Years of Experience •
- Australian Standard Pool Construction License •

Our priority. Happy clients.

Get in Touch With Us

0432 699 769

info@hfhomepool.com.au

82 Harriet Circuit, Regency Park, SA 5010

HFHOMEPOOL.COM.AU

LEGAL DISCLAIMERS COVERING ALL MATTERS

Stralia Sports.Com Pty Ltd its directors and staff respect the work of photographers and will never knowingly publish photos that are Copyright ©. We request and demand that any photos sent in, are not subject to Copyright ©. None of the above mentioned employees, directors or staff, will be held legally accountable for any photos sent to us for Copyright © breaches, as it is impossible to know to exact origins of any photo unless marked accordingly or with a watermark. If any photos are Copyright © then advise our office, and we will remove them immediately from our publications.

This entire publication is totally independent of each football league featured. All writers have their photos with the stories they write and they alone take full legal responsibility for any slanderous or defaming content. Stralia Sports.Com Pty Ltd its owners and editor will not be held legally responsible for any such legal claims. The responsibility lies with the writer concerned.

Copyright © No part of this publication may be reproduced, copied, printed or stored in a retrieval system, without the "written permission" of the publisher. Opinions expressed in "The South Australian Footballer" "The South Australian Adelaide Footballer" and "The South Australian Country Footballer" "The South Australian Women's Footballer" are not necessarily those of Stralia Sports.Com Pty Ltd the staff, owners, director or publisher. We believe all information and material produced in these publications is accurate, but gives no warranty in relation thereto and disclaims all liability for claims against the staff, owner, editor, media manager, directors, of "Stralia Sports.Com Pty Ltd or its employees, agents, or any other person, which may rise from any person acting on the material contained herein.

DO NOT OPEN OR READ THIS MAGAZINE OR USE THE WEBSITE AT www.safootballer.com.au UNLESS YOU HAVE THE CORRECT SOFTWARE AND APPROPRIATE PRECAUTIONS IN PLACE TO PREVENT ANY SOFTWARE OR HARDWARE DAMAGE TO ANY COMPUTER, TABLET, MOBILE PHONE OR ANY DEVICE, FROM ANY SOFTWARE DAMAGE DUE TO DESTRUCTIVE VIRUSES, DESTRUCTIVE WORMS OR SIMILAR.

Stralia Sports.Com Pty Ltd or its directors, owners, managers and writers, disclaim all responsibility and all liability without limitation for all expenses, losses, damages and costs that any person, or any company or business may incur, as a result of the material published in this publication, or on the website, or from any direct linking which occurs in the publication or on the website.